

# OPERATION HORMUZ

## MISSION 22 FORTRESS BREAKER

*BRIEFING MATERIAL (CLASSIFIED)*



TASK ID: AR-221011

USS CVN-71

VFA-97 WARHAWKS

2011.07.12



## **SITUATION UPDATE**

The joint OCA operation on Day 21 effectively eliminated the remaining Iranian air power and the Russian mercenary fighters in the Kerman region. One F-15C was shot down during the egress phase in the morning, but the pilot was rescued quickly by the Marines and returned safely. Air supremacy over the Kerman sky was held in our hands now. The ground force started pushing further north with more air support, however, they encountered much stronger resistance to the south of Rayen, presumably by the Russian mercenary troops. On Day 22, another joint air operation by the Air Force and the Navy was scheduled with the goal of destroying the air defense system in the Kerman region, which had been a major threat for our allied aircraft operating in that region. Similar to Jiroft's radar system, several early warning radar stations were deployed on the mountaintop of Khu e Bagh e Bala Mountain, connecting the frontline SAM sites with over 80nm distance. These early radar stations could share data with the SAM sites, allowing the SAM sites to launch the missile without turning on its own tracking radar until the last few miles from its target, turning Kerman City into an unpenetrable fortress. Therefore, finding and destroying these SAM sites became more complicated and perilous. As most fighter jets deployed at Kerman Airbase were destroyed in our OCA mission, the enemy CAP sorties have been restricted for daytime only, and the air defense system was the last shield protecting Kerman Airbase during night time. As planned, the first strike on these radars and SAMs would be carried out around midnight when there is no defenders in the sky. The mission aims to disarm the early warning radar stations and clear the long-range SAM sites deployed around Kerman City; followed by the second strike that would search and destroy enemy short-to-mid range SAM sites in Rayen region before dawn. If both missions were successful, a major offensive push toward Rayen would be carried out by our ground force in the morning, supported by several CAS sorties. Curfew in Bandar Abbas was lifted and people started to go outside, but life could hardly return to the same as it was before. Barriers used by the defenders were still blocking the streets, and building wrecks and bullet holes could be seen on every corner. Several cargo ships from Sohar and Muscat also berthed at Bandar Abbas' Shahid Bamonar Port, unloading thousands of tons of food, medicines, and other products for daily use. After the Hormuz Strait reopened for transit, more than 500 commercial ships departed the Persian Gulf in a single day, Brent futures fell below 100 USD/barrel as the logistics restored. However, threats to the free navigation of the Hormuz Strait still persist, especially from the increasing probability of nuclear strike by the Iranian army.

## PART A. MISSION BRIEFING

TASK ID: AR-221011



### MISSION BRIEFING

Hawk 1-1 is the Air Mission Commander (AMC), whilst Hawk 1-2 is the Deputy AMC. The Hawks package is assigned for SEAD mission to neutralize Early Warning Radar System and long-range SAM Sites in Kerman region. All aircraft will start cold on deck, comms check will be performed in about 1 minute after right engine started, both teams to keep PRI COMM at Green 1, and Hawk 1 and Hawk 2 to switch AUX COMM to Yellow 1 and Yellow 2 respectively. For Hawk 1, load and verify the assigned targets' coordinates to your weapon; for Hawk 2, it will be helpful to set OAP for WP6, which is the SA-10 Site's rough location (RNG 2NM BRG 300, ELEV 5735FT). A/A Bullseye point is WP5 (ROCK). Joker fuel is 6,000 lbs and Bingo fuel is 5,500 lbs. Make sure all members in Hawks flights are in your datalink network. After being cleared by the taxi director, proceed to your assigned catapult.

Case III departure, we are cleared to turn to WP1 (RV) after launch without intercepting the DME-10 arc as there will be no other sorites at this time, the Air Boss has agreed on this so we could save a few amount of fuel. The average altitude in our operation area is about 5,000 feet, and the highest mountain peak is 14,000 feet, mission floor is 20,000 feet MSL. TACAN Rendezvous at WP1 at 25,000 feet with 250 IAS. After regrouping, push for WP2 (DRY), climb to 30,000 feet. We will switch PRI COMM to Red 1 (CH2) and check in with Strike. After feet dry at WP2, all external lights out except formation light. Then switch PRI COMM to Red 3 (CH4) and check in with Darkstar. Our contract speed for ingress is 0.85Mach. At WP3 (ING), Viper 1 and Viper 2, four F-16C are expected to join us, and we will push for WP4 (IP) together. We will Fence In after WP3 and increase speed to 0.90 Mach before WP4, external tanks can be dumped when hit empty.

At WP4, we will get the final clearance from Darkstar. Once cleared, Hawk 1 will initiate the attack on the two EW radar sites and the SA-5 radars; Hawk 2, Viper 1 and Viper 2 will orbit at WP4 until both EW radar stations are destroyed. Hawk 1 will run in from WP4 to WP5 (ROCK), increase to supersonic to achieve the optimum launch speed for your SLAM-ERs, but always keep south of WP5. SLAM-ERs should be launched at least 5nm before WP5 then Hawk 1 should turn back to WP4. Report time on target to keep the package informed. Prioritize attacking on the Early Warning Radar Stations first, then the SA-5 Radars.

## PART A. MISSION BRIEFING

TASK ID: AR-221011



Once the two EW radar stations are destroyed, the other SAM sites are presumed to turn on their searching radar. Viper 1 and Viper 2 will run in to suppress the SA-11 sites in the north of WP5. Once the SA-5 searching radar and tracking radar are destroyed, the SA-5 long-range SAM will no longer be a threat. Hawk 1 continue attacks on the comms towers; Hawk 2 initiate attack on the SA-10 radars by launching HARM in PB mode, but stay south of WP5. After Viper team confirm kills the SA-11, Hawk 2 will be safe to run in to Kerman Airbase to throw JDAMs on the other SA-10 units. Keep in mind two SA-6 Sites are deployed in the east of the city, Hawk 2 could either destroy these Gainful radars by firing HARMs, or attack the SA-10 Site from the west to stay outside the SA-6 range. Hawk 2 priority is the long-range SA-10 Site.

Vipers will continue to suppress all the SA-11 sites in the region and report the progress to us. Once Hawk 1 and Hawk 2 completed all the objectives, we will report back to Darkstar and the whole package will egress via WP7 (EGR). After checking out with Darkstar, we will switch PRI COMM to Red 1 (CH2) and report back to Strike. At WP8 (WET), we will FENCE OUT and get feet wet. We will separate from Viper team from there, then switch PRI COMM to Green 1 (CH1) and contact Marshal for recovery. Shell 1 and Shell 2 will be standing by on deck and serving as our recovery tankers as usual. For emergency, alternate landing airfield at Bandar Abbas Airport, Khasab or Fujairah Airport.

It is midnight now and we didn't get much time to sleep after yesterday morning's OCA mission, but let's get this mission done safely and quickly, so we can return home and get a good sleep in the morning. Now gears up and see you all on the deck. Good luck!

### [Designer's Note]

1. Hawk 1-1 (Tail#211) is Mission Commander and must be seated by a Player.
2. A backup Hawk 3 Flight with 4 F/A-18C is hot on ramp with air-to-air weapons for escort role, but players can change weapon loadout as needed.
3. Recovery tankers are ready on deck and will be launched upon request via F10 Radio Menu on your egress leg.
4. AI Hawk 2 will be activated if no Players sit into Hawk 2 Flight (after all Hawk 1 members outside DME-1), Players can use F10 Radio Menu to deactivate AI Hawk 2.

**PART B. TACTICAL INFORMATION**

TASK ID: AR-221011

**BASIC INFORMATION**

START TIME 12-JUL-2011 0100LT (2200UTC)

SCHD LAU TIME 0115LT CASE III DEP LOC N2638E5644

EXP REC TIME 0300LT CASE III REC LOC N2609E5656

HOME FREQ 305AM TCN 71X ILS 11 LINK4 336

WX CLR SR 0522LT SS 1913LT TEMP 25C QNH 2993 WIND 331 5KTS SEA 1 NGT VSBY

**MISSION OBJECTIVES**

Primary Destroyed EW Radar and SA-5 Radar system in Kerman Region

Secondary Destroyed SA-10 Site deployed near Kerman Airbase

Tertiary Destroyed SA-6 Sites deployed in the east of Kerman City

**THREAT ANALYSIS**

Air to air N/A

Surface to air SA-10, SA-6 at Kerman, SA-5 near Darband, SA-11 in Rayen region

**FLIGHT ROSTER**

FLIGHT	CALLSIGN	TAIL#	ROLE	A/A TCN	DATALINK	LSR CODE
Hawk 1	Hawk 1-1	211	Lead	11X	HK11	N/A
	Hawk 1-2	212	Wing	12X	HK12	N/A
	Hawk 1-3	213	Lead	13X	HK13	N/A
	Hawk 1-4	214	Wing	14X	HK14	N/A
Hawk 2	Hawk 2-1	215	Lead	21X	HK21	N/A
	Hawk 2-2	216	Wing	22X	HK22	N/A
	Hawk 2-3	217	Lead	23X	HK23	N/A
	Hawk 2-4	218	Wing	24X	HK24	N/A

**PACKAGE ELEMENTS**

FLIGHT	AIRCRAFT	NO.	TASK	TARGET
Hawk 1	F/A-18C	4	Pinpoint Strike	EW Radar & SA-5 Radar
Hawk 2	F/A-18C	4	DEAD	SA-10 & SA-6 Sites
Viper 1	F-16C	2	DEAD	SA-11 Sites
Viper 2	F-16C	2	DEAD	SA-11 Sites

**SUPPORT FLIGHT**

FLIGHT	AIRCRAFT	NO.	TASK	A/A TCN	REMARKS
Magic	E-2D	1	AWACS		Callsign STRIKE
Darkstar	E-3A	1	AWACS		Callsign DARKSTAR
Texaco 1	KC-135M	1	Refuel	53X	CH10 FL250
Arco 1	KC-130	1	Refuel	54X	CH11 FL210
Shell 1	S-3B	1	Refuel	51X	CH8 FL TBN
Shell 2	S-3B	1	Refuel	52X	CH9 FL TBN

**ALTERNATE AIRFIELD**

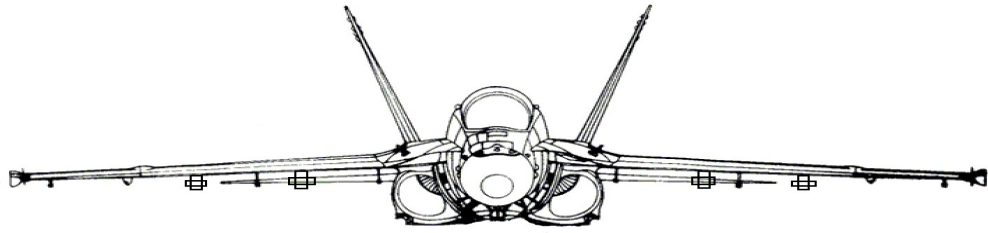
AIRFIELD	FREQUENCY	COORDINATE	REMARKS
Fujairah	124.600 AM	N25°06'21" E56°20'25"	Nearest to Recovery
Khasab	124.350 AM	N26°10'57" E56°14'37"	Peninsula north tip
B.Abbas	118.100 AM	N27°13'58" E56°23'12"	Under friendly control

## PART B. TACTICAL INFORMATION

TASK ID: AR-221011



### LOADOUT



STATION	9	8	7	6	5	4	3	2	1
Hawk 1-1	9X	84H	WT	120C	DL	AFLIR	WT	84H	9X
Hawk 1-2	9X	84H	WT	120C	DL	AFLIR	WT	84H	9X
Hawk 1-3	9X	84H	WT	120C	DL	AFLIR	WT	84H	9X
Hawk 1-4	9X	84H	WT	120C	DL	AFLIR	WT	84H	9X
Hawk 2-1	9X	2*82J	WT	120C	CT	AFLIR	88	2*82J	9X
Hawk 2-2	9X	2*82J	WT	120C	CT	AFLIR	88	2*82J	9X
Hawk 2-3	9X	2*82J	WT	120C	CT	AFLIR	88	2*82J	9X
Hawk 2-4	9X	2*82J	WT	120C	CT	AFLIR	88	2*82J	9X

INTERNAL	GUNS	FLARE	CHAFF	TOTAL FUEL	TOTAL WEIGHT	ADV TRIM
Hawk 1-1	578	30	90	15291 lbs	47318 lbs	17
Hawk 1-2	578	30	90	15291 lbs	47318 lbs	17
Hawk 1-3	578	30	90	15291 lbs	47318 lbs	17
Hawk 1-4	578	30	90	15291 lbs	47318 lbs	17
Hawk 2-1	578	30	90	13047 lbs	47322 lbs	17
Hawk 2-2	578	30	90	13047 lbs	47322 lbs	17
Hawk 2-3	578	30	90	13047 lbs	47322 lbs	17
Hawk 2-4	578	30	90	13047 lbs	47322 lbs	17

### RADIO COMMS

L	CODE	AGCY	FREQ	R	CODE	AGCY	FREQ
1	Green 1	Marshal	305.00	1	Green 1	Marshal	305.00
2	Red 1	Strike	264.00	2	Red 1	Strike	264.00
3	Red 2	Wizard	265.00	3	Red 2	Wizard	265.00
4	Red 3	Darkstar	256.00	4	Red 3	Darkstar	256.00
5	Yellow 1	Hawk 1	254.00	5	Yellow 1	Hawk 1	254.00
6	Yellow 2	Hawk 2	250.00	6	Yellow 2	Hawk 2	250.00
7	Yellow 3	Hornet	270.00	7	Yellow 3	Hornet	270.00
8	Violet 1	Shell 1	257.00	8	Violet 1	Shell 1	257.00
9	Violet 2	Shell 2	255.00	9	Violet 2	Shell 2	255.00
10	Violet 3	Texaco 1	262.00	10	Violet 3	Texaco 1	262.00
11	Violet 4	Arco 1	259.00	11	Violet 4	Arco 1	259.00
12	Orange 1	Devil	268.00	12	Orange 1	Devil	268.00
13	Orange 2	Chevy	269.00	13	Orange 2	Chevy	269.00
14	Orange 3	Check	260.00	14	Orange 3	Check	260.00
15	Blue 1	Raven	263.00	15	Blue 1	Raven	263.00
16	Blue 2	Dodge	261.00	16	Blue 2	Dodge	261.00
17	Blue 3	Ford	267.00	17	Blue 3	Ford	267.00
18	Indigo 1	Trek	251.00	18	Indigo 1	Trek	251.00
19	Indigo 2	Viper	253.00	19	Indigo 2	Viper	253.00
20	Indigo 3	Colt	266.00	20	Indigo 3	Colt	266.00



**PART B. TACTICAL INFORMATION**

TASK ID: AR-221011

**FLIGHT PLAN (HAWK 1)**

WP	NAME	TIME	SPEED	ALTITUDE	ACTION	REMARKS
0	LAU	0115L			Launch	Bingo 5500 lbs
1	RV	0120L	0.60M	MSL 25K	Regroup	Exp Push Time 27
2	DRY	0130L	0.85M	MSL 30K	Check In	Strike & Darkstar
3	ING	0140L	0.85M	MSL 35K	Ingress	Fence In
4	IP	0145L	0.90M	MSL 35K	Attack	Start OCA
5	ROCK					Mt Shah Peak
6	KER					Kerman Airbase
7	EGR	0230L	0.85M	MSL 35K	Egress	Fence Out
8	WET	0242L	0.80M	MSL 30K	Feet Wet	Viper Separate
9	REC	0250L	0.40M	MSL 1K	Recovery	Tanker Ready

**FLIGHT PLAN (HAWK 2)**

WP	NAME	TIME	SPEED	ALTITUDE	ACTION	REMARKS
0	LAU	0115L			Launch	Bingo 5500 lbs
1	RV	0120L	0.60M	MSL 25K	Regroup	Exp Push Time 27
2	DRY	0130L	0.85M	MSL 30K	Check In	Strike & Darkstar
3	ING	0140L	0.85M	MSL 35K	Ingress	Fence In
4	IP	0145L	0.90M	MSL 35K	Attack	Start OCA
5	ROCK					Mt Shah Peak
6	KER					Kerman Airbase
7	EGR	0230L	0.85M	MSL 35K	Egress	Fence Out
8	WET	0242L	0.80M	MSL 30K	Feet Wet	Viper Separate
9	REC	0250L	0.40M	MSL 1K	Recovery	Tanker Ready

**TARGET COORDINATE (HAWK 1)**

NO.	TYPE	COORDINATES (PRECISE)	ELEVATION	REMARKS	PRIORITY
1	Radar	N30°33'17.96" E56°21'23.00"	10460ft	EW Radar	PRI
2	Radar	N30°33'38.12" E57°09'28.58"	12230ft	EW Radar	PRI
3	Radar	N30°57'09.80" E56°58'28.00"	7450 ft	SA-5 TR	PRI
4	Radar	N30°57'09.75" E56°58'34.64"	7445 ft	SA-5 SR	PRI
5	Tower	N30°26'29.55" E56°56'59.00"	7460ft	North Tower	SEC
6	Tower	N30°16'22.75" E57°01'58.54"	5760ft	South Tower	SEC

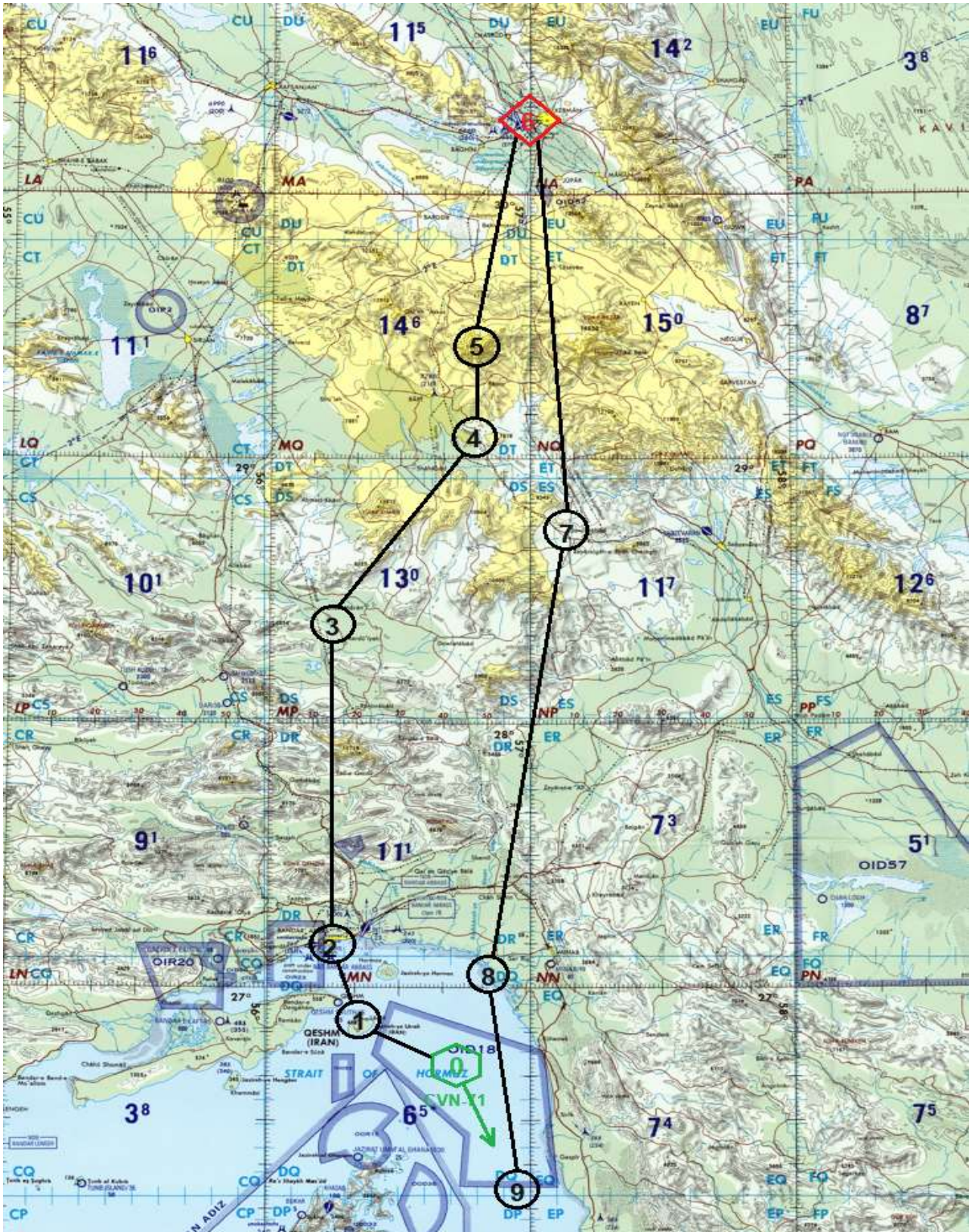
**TARGET COORDINATE (HAWK 2)**

NO.	TYPE	COORDINATES (PRECISE)	ELEVATION	REMARKS	PRIORITY
1	Vehicle	N30°16'45.87" E56°55'13.80"	5736ft	CMD CTR	PRI
2	Radar	N30°16'42.94" E56°55'13.60"	5736ft	BB SR	PRI
3	Radar	N30°16'44.70" E56°55'10.87"	5736ft	CS SR	PRI
4	Radar	N30°16'44.18" E56°55'16.55"	5736ft	FL TR	PRI
5	Launcher	N30°16'42.12" E56°55'20.46"	5736ft	S-300 TEL	PRI
6	Launcher	N30°16'41.48" E56°55'23.67"	5736ft	S-300 TEL	PRI
7	Launcher	N30°16'40.81" E56°55'26.40"	5736ft	S-300 TEL	PRI
8	Launcher	N30°16'40.11" E56°55'29.64"	5736ft	S-300 TEL	PRI
9	Launcher	N30°16'39.40" E56°55'33.00"	5736ft	S-300 TEL	PRI
10	Launcher	N30°16'38.57" E56°55'36.44"	5736ft	S-300 TEL	PRI





## FLIGHT PLAN



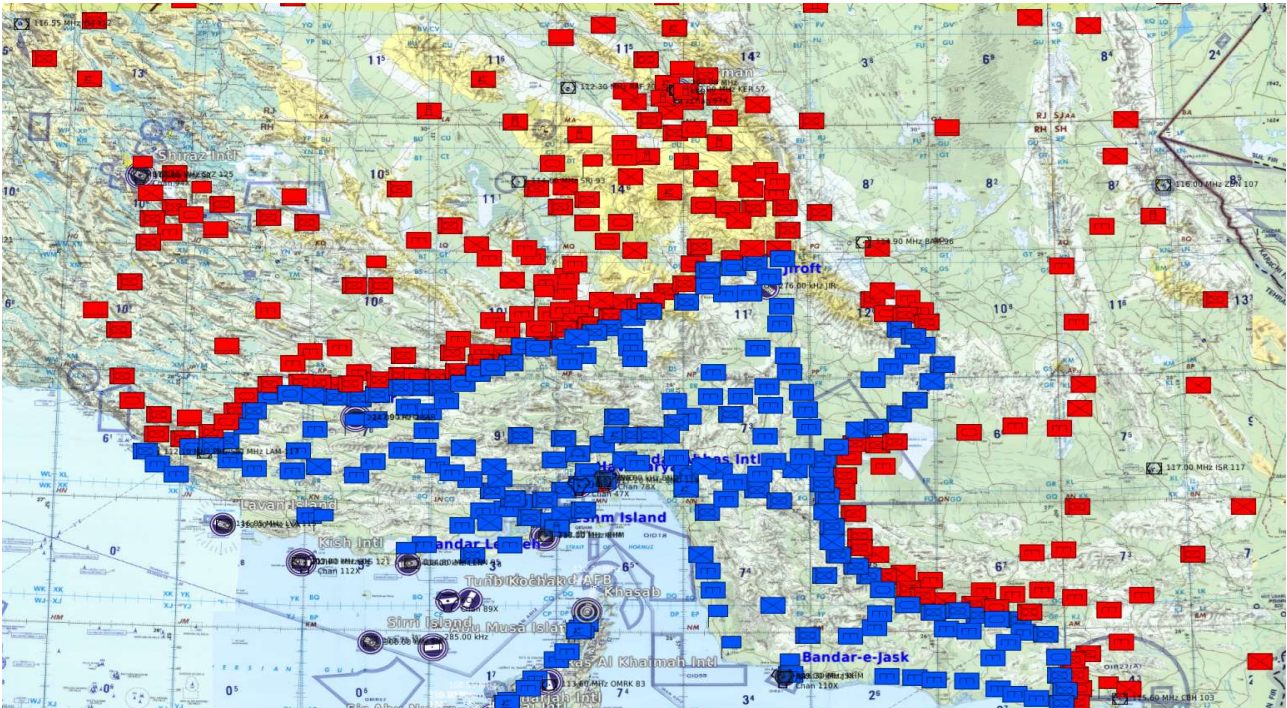




## AIR OPERATION CHART



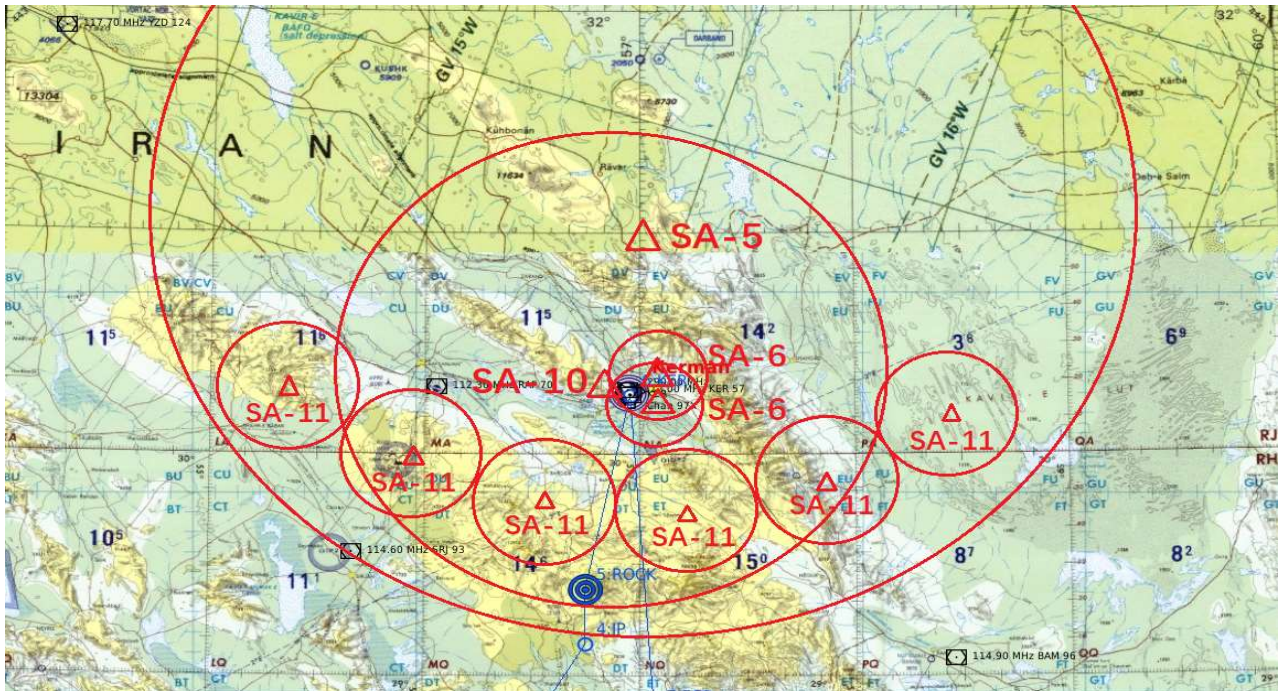
## GROUND OPERATION CHART



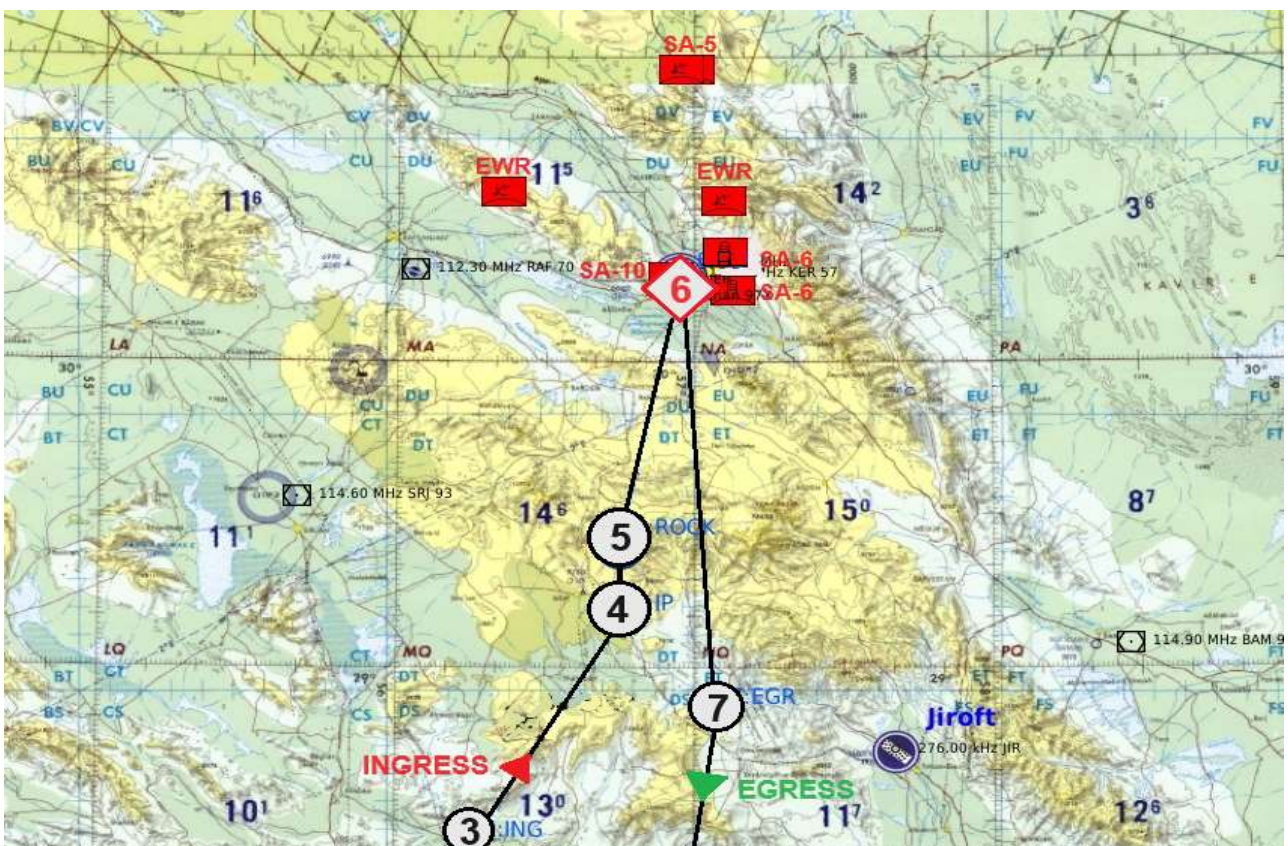




## TARGET AREA THREATS



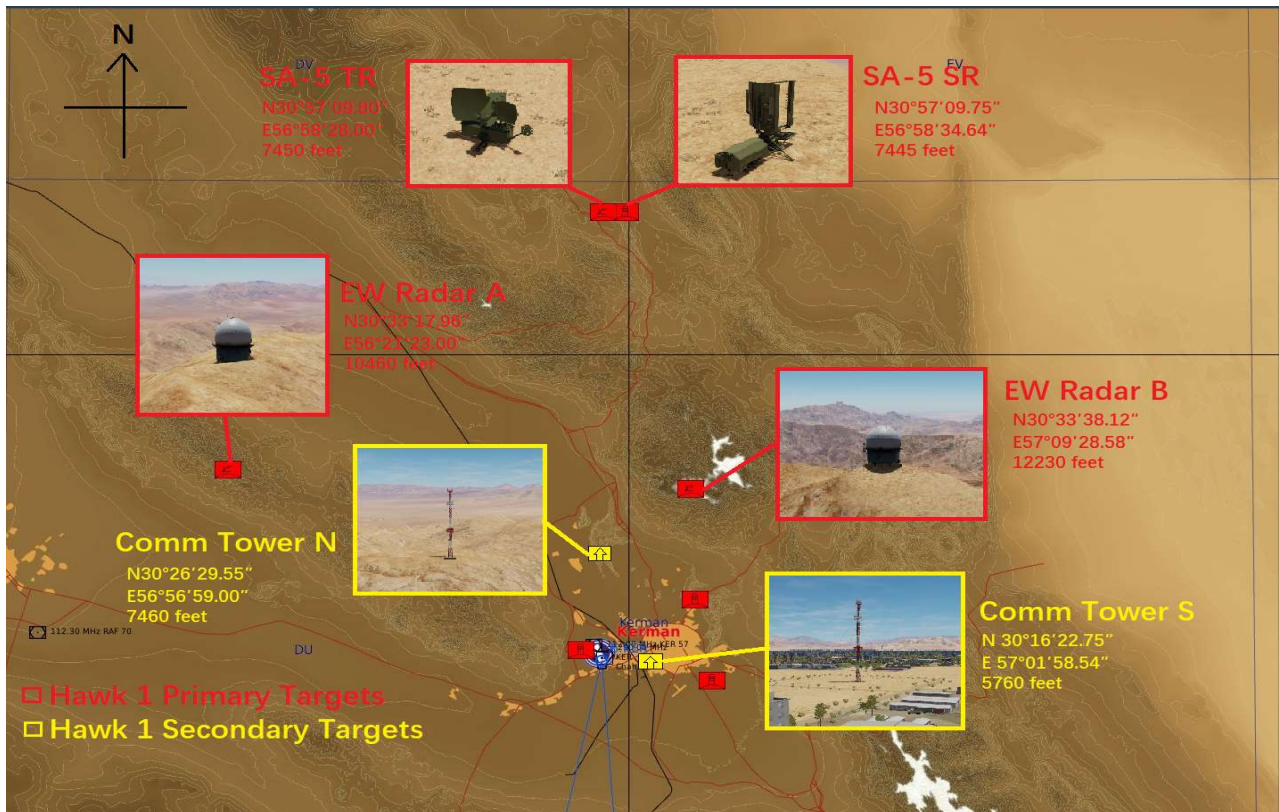
## TARGET AREA OVERVIEW



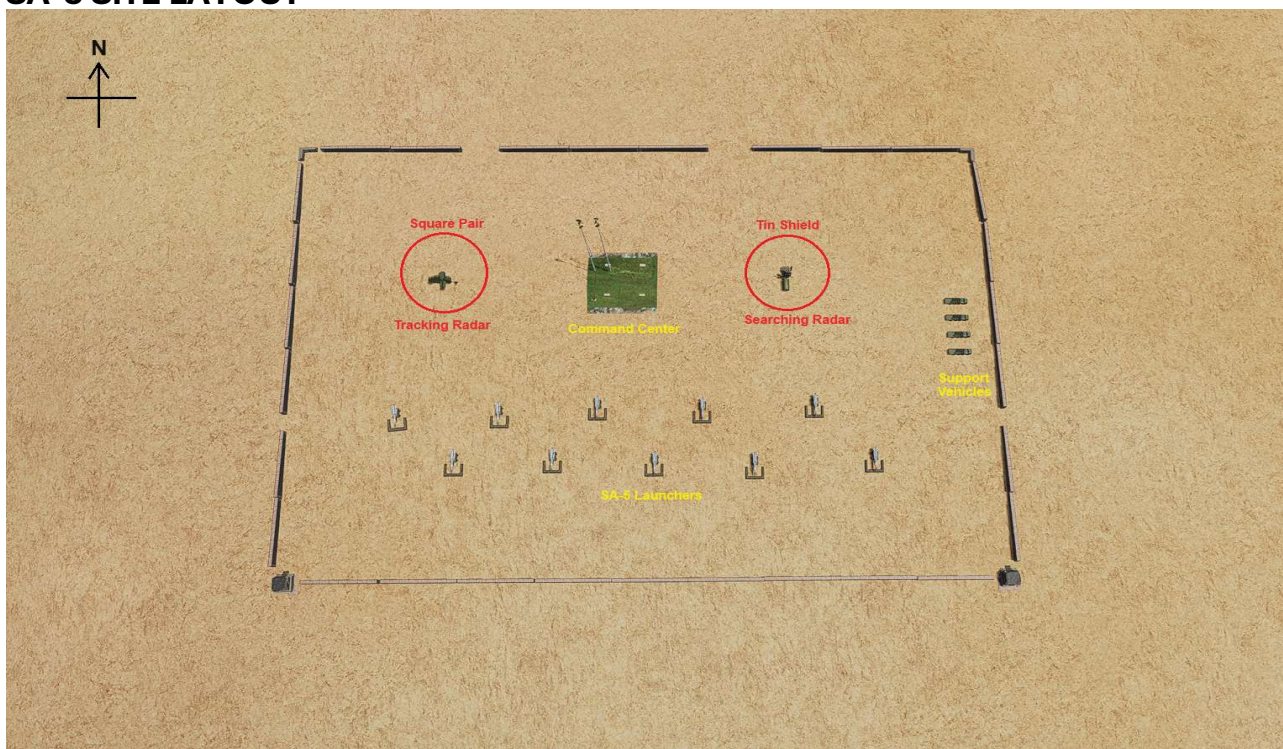




## HAWK 1 TARGET CHART



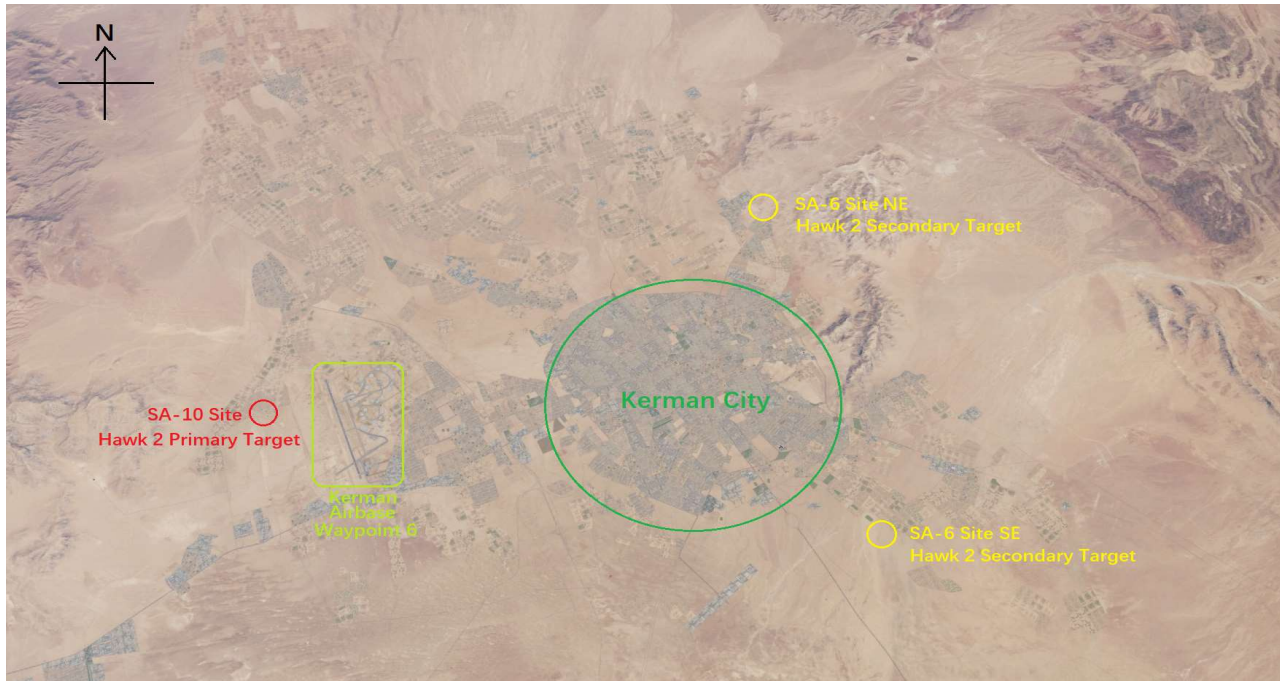
## SA-5 SITE LAYOUT







## HAWK 2 TARGET CHART



## SA-10 SITE LAYOUT

