

**BASIC INFO**

START TIME 14-JUL-2011 0300LT (0000UTC)
 SCHED LAU TIME 0310LT CASE III DEP LOC N2424E5904
 EXP REC TIME 0645LT CASE I REC LOC N2405E5959
 HOME FREQ 305AM TCN 71X ILS 11 LINK4 336
 WX STM SR 0534LT SS 1911LT TEMP 26C QNH 2993 WIND 280 10KTS SEA 2

FLIGHT

| FLT | CS | T# | A/A | DLNK | LASER | WPN |
|--------|----------|-----|-----|------|-------|---------------------------------------|
| Hawk 1 | Hawk 1-1 | 211 | 11X | HK11 | N/A | 9X,84,WT,120C,CT,120C,WT,84,9X |
| | Hawk 1-2 | 212 | 12X | HK12 | N/A | 9X,84,WT,120C,CT,120C,WT,84,9X |
| | Hawk 1-3 | 213 | 13X | HK13 | N/A | 9X,84,WT,120C,CT,120C,WT,84,9X |
| | Hawk 1-4 | 214 | 14X | HK14 | N/A | 9X,84,WT,120C,CT,120C,WT,84,9X |
| Hawk 2 | Hawk 2-1 | 215 | 21X | HK21 | N/A | 9X,AGM65,WT,120C,CT,AFLIR,WT,AGM65,9X |
| | Hawk 2-2 | 216 | 22X | HK22 | N/A | 9X,AGM65,WT,120C,CT,AFLIR,WT,AGM65,9X |
| Hawk 3 | Hawk 3-1 | 217 | 31X | HK23 | N/A | 9X,AGM88,WT,120C,CT,AFLIR,WT,AGM88,9X |
| | Hawk 3-2 | 218 | 32X | HK24 | N/A | 9X,AGM88,WT,120C,CT,AFLIR,WT,AGM88,9X |

FLIGHT PLAN (HAWK PACKAGE)

| WP | NAME | TIME | SPEED | ALT | ACT |
|----|------|-------|-------|-----|-----------|
| 0 | LAU | 0310L | | | Launch |
| 1 | FRV | 0315L | 0.60M | 25K | Regroup |
| 2 | DRY | 0330L | 0.80M | 25K | Feet Dry |
| 3 | AAR | 0342L | 0.80M | 25K | Refuel |
| 4 | SRV | 0400L | 0.80M | 25K | Regroup |
| 5 | LOW | 0418L | 0.70M | 300 | Descend |
| 6 | SKD | 0426L | 0.70M | 300 | Ingress |
| 7 | ROCK | 0442L | 0.70M | 300 | Ingress |
| 8 | HOT | 0454L | 0.70M | 300 | Fence In |
| 9 | IP | 0457L | 0.70M | 300 | Armstrong |
| 10 | TGT | 0500L | | | Attack |
| 11 | AFG | 0512L | 0.85M | 30K | Refuel |
| 12 | PAK | 0545L | 0.85M | 40K | Egress |
| 13 | WET | 0615L | 0.85M | 40K | Feet Wet |
| 14 | REC | 0645L | 0.50M | 1K | Recovery |

ALT AFLD

| AFLD | FREQ | COOR |
|--------------|---------|-----------------|
| Banda-e-Jask | 124.350 | N26°11' E56°14' |

RADIO COMMS

| CH | CODE | AGCY | FREQ |
|----|----------|----------|--------|
| 1 | Green 1 | Marshal | 305.00 |
| 2 | Red 1 | Strike | 264.00 |
| 3 | Red 2 | Guardian | 265.00 |
| 4 | Red 3 | Darkstar | 256.00 |
| 5 | Yellow 1 | Hawk 1 | 254.00 |
| 6 | Yellow 2 | Hawk 2 | 250.00 |
| 7 | Yellow 3 | Hawk 3 | 270.00 |
| 8 | Violet 1 | Shell 1 | 257.00 |
| 9 | Violet 2 | Shell 2 | 255.00 |
| 10 | Violet 3 | Texaco 1 | 262.00 |
| 11 | Violet 4 | Arco 1 | 259.00 |
| 12 | Orange 1 | Devil | 268.00 |
| 13 | Orange 2 | Chevy | 269.00 |
| 14 | Orange 3 | Check | 260.00 |
| 15 | Blue 1 | Raven | 263.00 |
| 16 | Blue 2 | Dodge | 261.00 |
| 17 | Blue 3 | Ford | 267.00 |
| 18 | Indigo 1 | Trek | 251.00 |
| 19 | Indigo 2 | Viper | 253.00 |
| 20 | Indigo 3 | Colt | 266.00 |



| SUPPORT | | | | | |
|----------|---------|--------|-----|----|---------|
| FLT | AC | TASK | A/A | CH | RMRK |
| Magic | E-2D | AWACS | | 2 | Strike |
| Texaco 1 | KC-135M | Refuel | 53X | 10 | 262.0AM |
| Texaco 2 | KC-135M | Refuel | 55X | M | 262.5AM |
| Texaco 3 | KC-135M | Refuel | 57X | M | 262.7AM |
| Texaco 4 | KC-135M | Refuel | 58X | M | 262.8AM |
| Arco 1 | KC-130 | Refuel | 54X | 11 | 259.0AM |
| Arco 2 | KC-130 | Refuel | 56X | M | 259.5AM |
| Shell 1 | S-3B | Refuel | 51X | 8 | 257.0AM |
| Shell 2 | S-3B | Refuel | 52X | 9 | 255.0AM |

| THREAT | | | | |
|--------|-----|-----|----|-----------------|
| TYPE | AC | HC | WP | OAP |
| ZSU-23 | AAA | 121 | 10 | 133 DEG 2330 FT |
| SA-13 | IR | | 10 | 057 DEG 1840 FT |
| SA-6 | RDR | 108 | 10 | 238 DEG 3500 FT |
| SA-8 | RDR | 118 | 10 | 291 DEG 3100 FT |

| PACKAGE | | | |
|---------|---------|-----|-----------------|
| FLT | AC | NO. | TASK |
| Hawk 1 | F/A-18C | 4 | Pinpoint Strike |
| Hawk 2 | F/A-18C | 2 | SEAD Escort |
| Hawk 3 | F/A-18C | 2 | SEAD Escort |
| Ford 1 | F-15C | 2 | Escort |
| Viper 1 | F-16C | 2 | SEAD Escort |
| Raven 1 | F/A-18C | 4 | Backup Flight |
| Raven 2 | F/A-18C | 4 | Backup Flight |

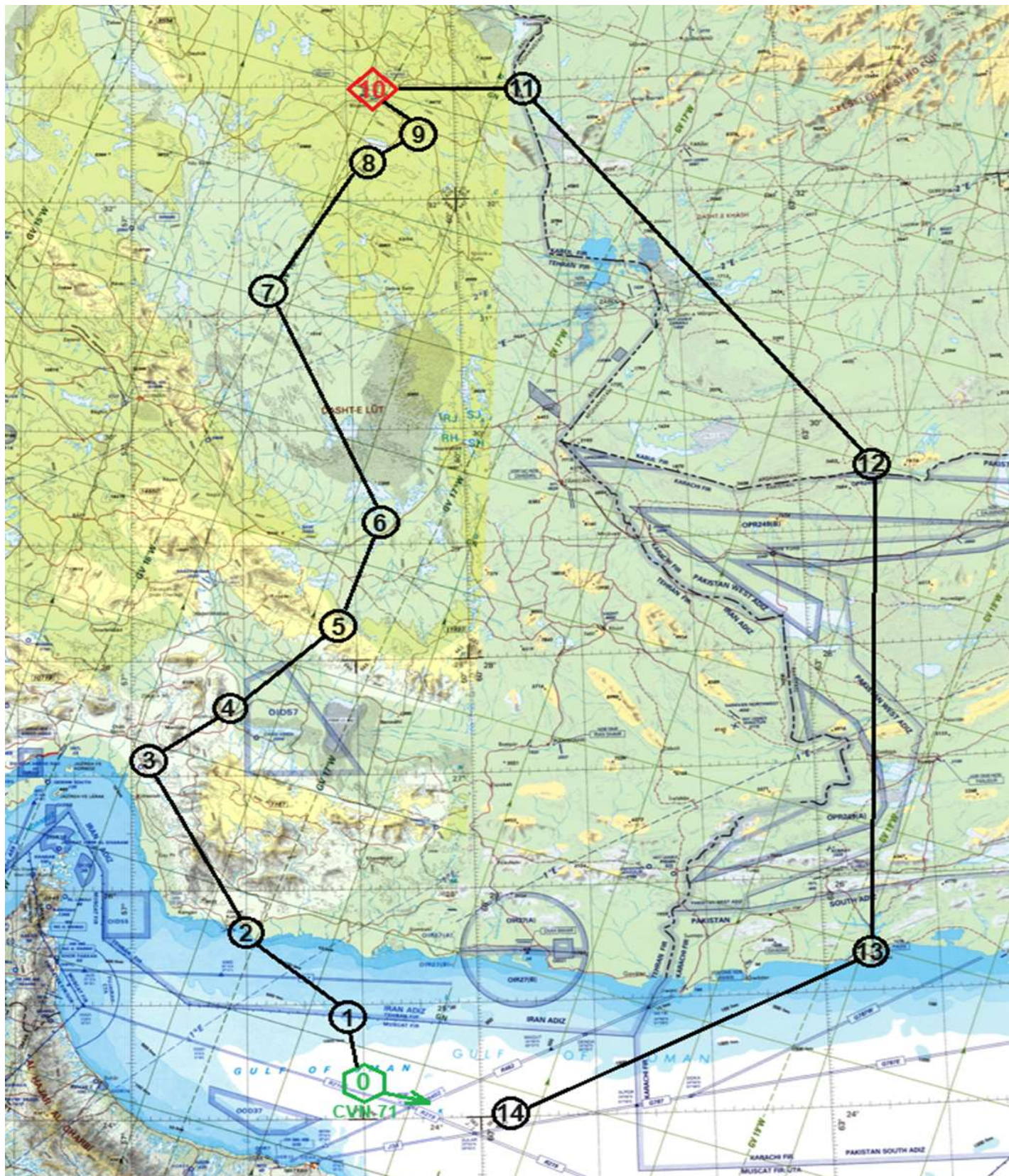
| CODEWORD | |
|----------|---------------|
| CODE | INT |
| Opera | Mission Name |
| Normandy | Mission is GO |
| Dunkirk | Mission ABORT |

NOTE

1. HARM Code: 108 for SA-6; 117 for SA-8; 118 for SA-13; 121 for Zsu-23 Shilka
2. Latest Push time for Opera 0430LT
3. EMCON from WP4 to WP9
4. Tail Fuze setting 0.25s for delayed explosion
5. Prior to WP12, switch AUX COMM with manual mode on 123.70 AM and enable Guard, contact Karachi ATC for clearance to fly through Pakistan Airspace

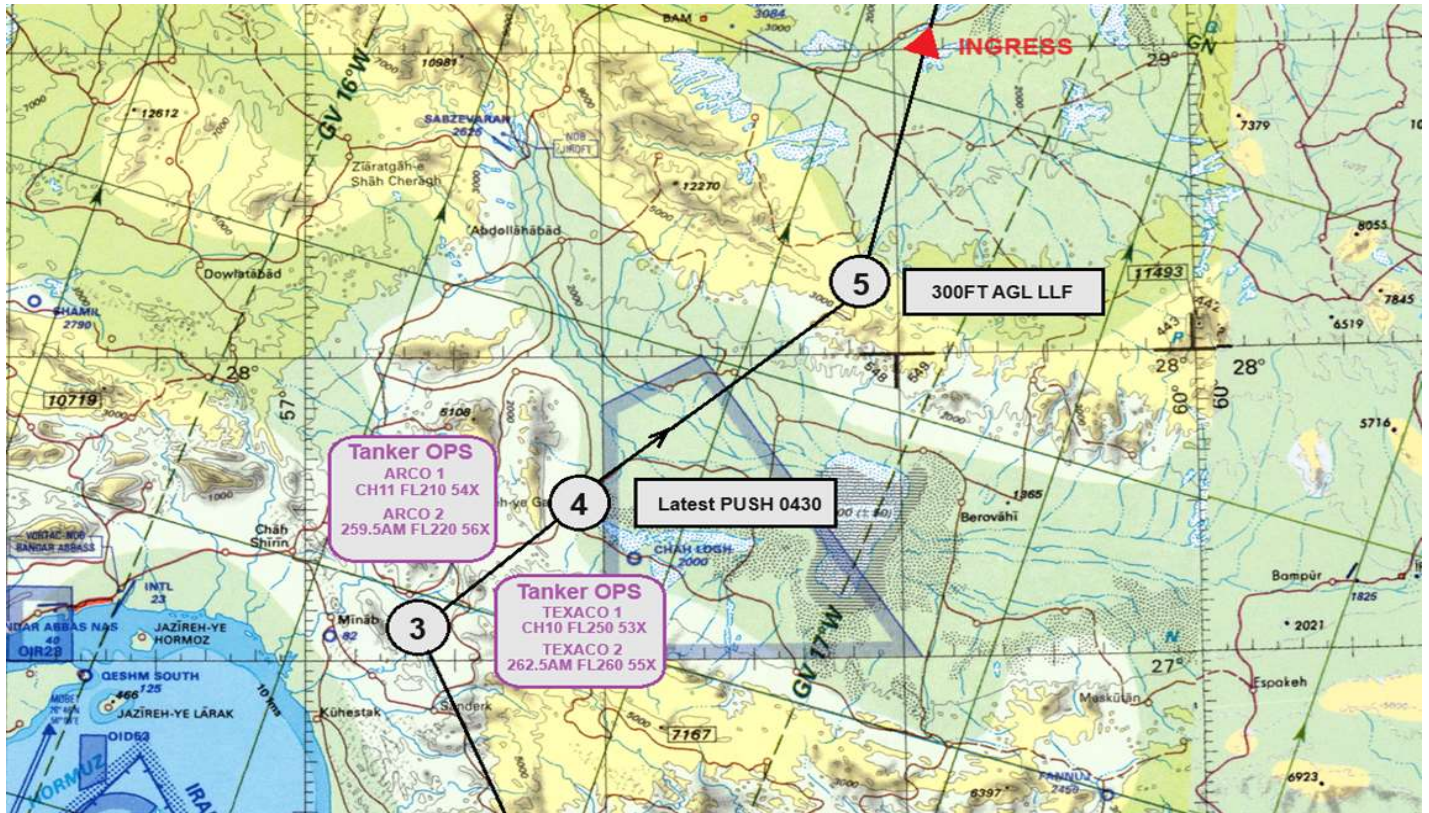


FLIGHT PLAN





INGRESS PHASE TANKER OPS CHART

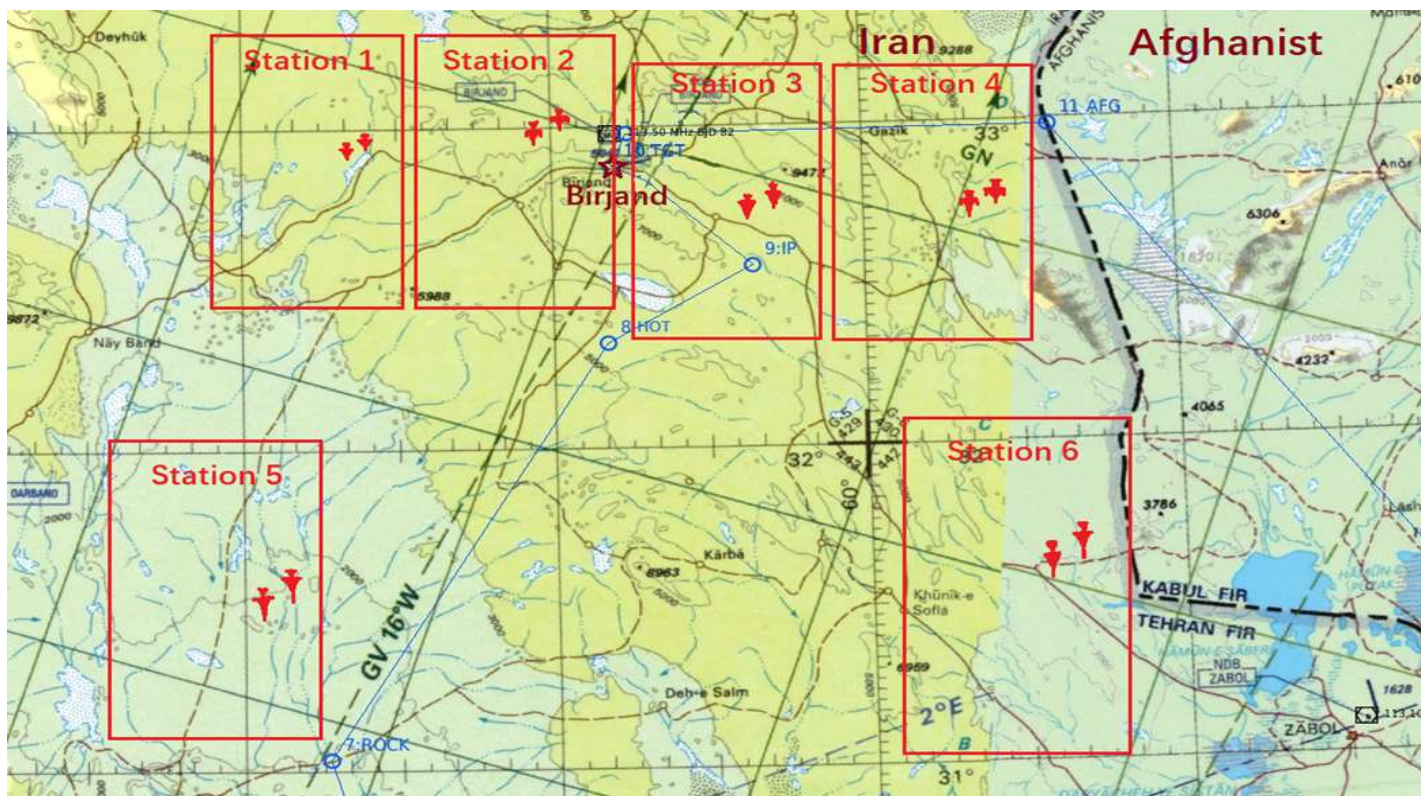


EGRESS PHASE TANKER OPS CHART





ENEMY CAP FLIGHT CHART

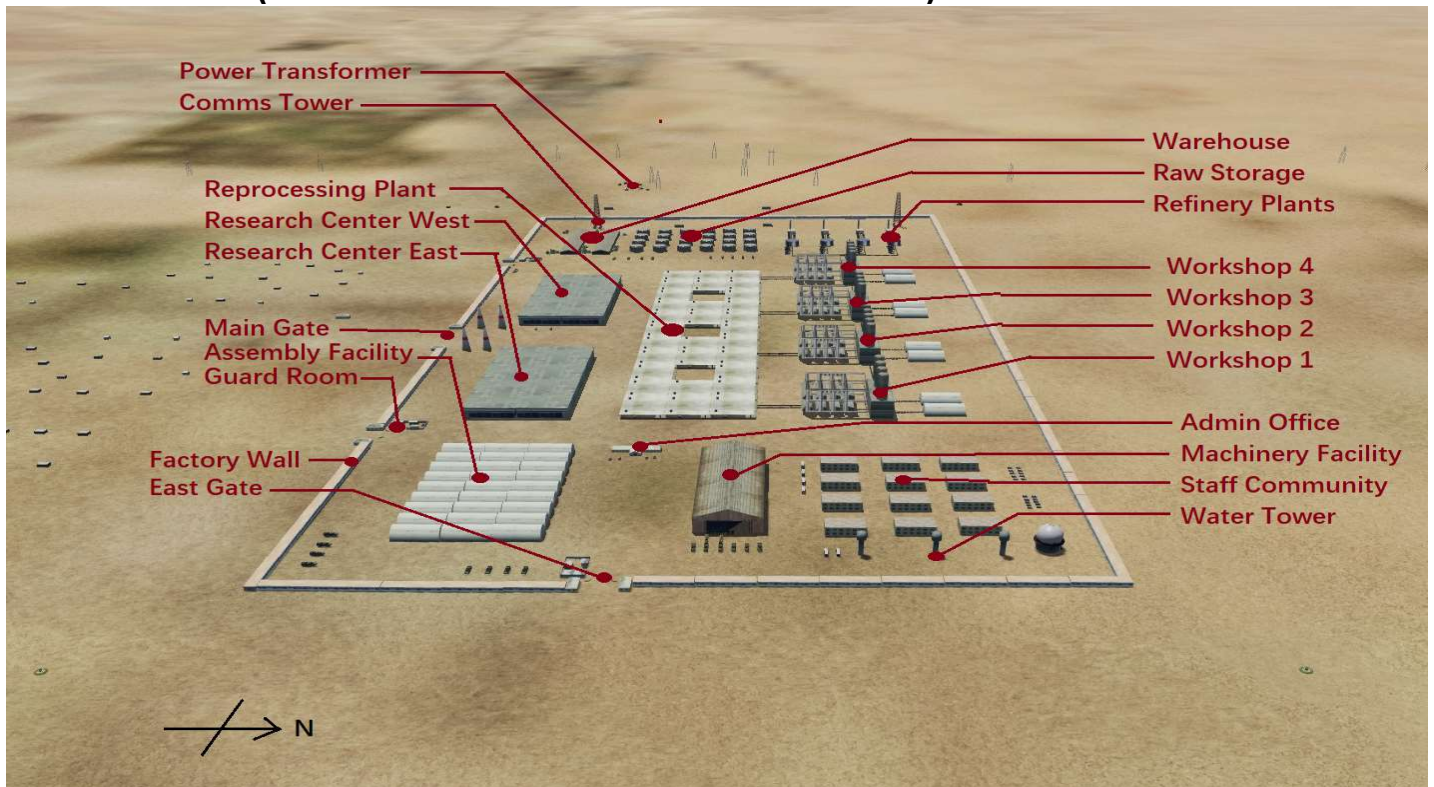


TARGET SITE SAM & AAA

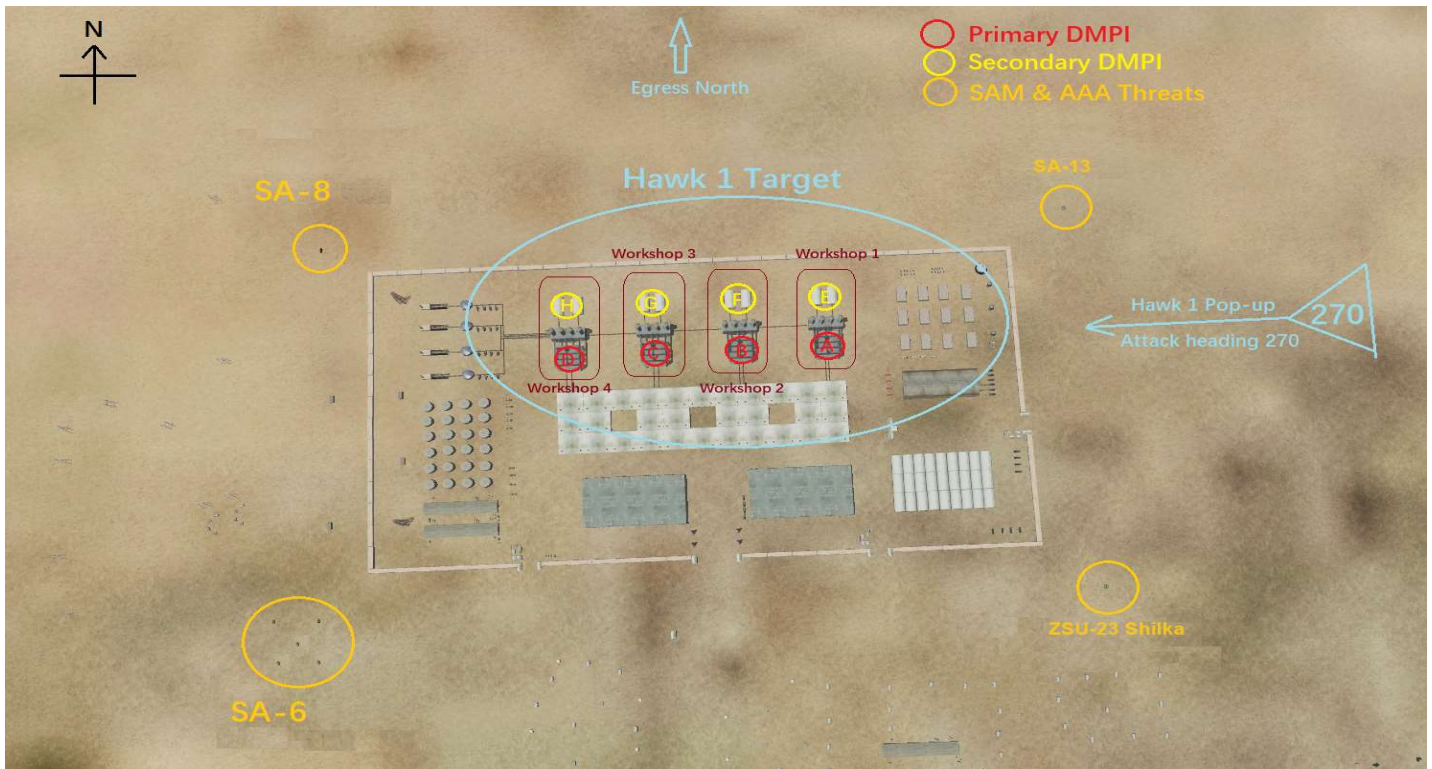




TARGET IMAGE (BIRJAND URANIUM ENRICHMENT PLANT)



TARGET LAYOUT (PRI DMPI: A, B, C, D; SEC DMPI: E, F, G, H)





BIRJAND CITY SATELLITE IMAGE



BIRJAND URANIUM ENRICHMENT PLANT PHOTO

