

MISSION: #1168



START TIME 24-JUN-2011 1000LT (0600UTC)

TAKEOFF TIME 1010LT LAND TIME 1120LT

HOME FREO AL DHAFRA 251.1AM TCN 96X AL MINHAD 250.1AM

WX CLR SR 0526LT SS 1912LT TEMP 25 C CLD 18K WIND 120 7KTS GOOD VSBY

FLT	CS	T#	TCN	DLNK	LSR	WPN
Viper 1	1-1	91	11X	VR11	1651	AC,9X,2*105,WT,T,ECM,H,WT,2*105,9X,AC
	1-2	92	12X	VR12	1652	AC,9X,2*105,WT,T,ECM,H,WT,2*105,9X,AC
Viper 2	2-1	93	13X	VR21	1653	AC,9X,GBU24,WT,T,ECM,H,WT,GBU24,9X,AC
	2-2	94	14X	VR22	1654	AC,9X,GBU24,WT,T,ECM,H,WT,GBU24,9X,AC

UHF	AGCY	FREQ	VHF	AGCY	FREQ
1	Al Dhafra	251.10	1	Al Dhafra	126.50
2	Al Minhac	250.10	2	Al Minhac	118.55
3	Liwa	250.95	3	Liwa	119.30
4	Khasab	250.00	4	Khasab	124.35
5	Darkstar	256.00	5	Viper 1	131.10
6	Magic	264.00	6	Viper 2	131.20
7	Wizard	265.00	7	Viper 3	131.30
8	Texaco 3	257.30	8	Viper 4	131.40
9	Texaco 4	257.40	9	Dodge 1	132.10
10	Texaco 5	257.50	10	Dodge 2	132.20
11			11	Dodge 3	132.30
12			12	Dodge 4	132.40
13			13	Hawg 1	141.10
14			14	Hawg 2	141.20
15			15	Hawg 3	141.30
16			16	Hawg 4	141.40
17			17	Ford 1	142.10
18			18	Ford 2	142.20
19			19	Ford 3	142.30
20			20	Ford 4	142.40

FLT	A/C	TASK	A/A	FREQ
Darkstar	E-3A	AWACS		UHF CH5
Wizard	E-3A	AWACS		UHF CH7
Texaco 3	KC-135	Refuel	57X	UHF CH8
Texaco 4	KC-135	Refuel	58X	UHF CH9
Texaco 5	KC-135	Refuel	59X	UHF CH10

AFLD	FREQ	COORD
Al Minhac	250.1AM	N25°01'34" E55°22'03"
Khasab	250.0AM	N23°39'06" E53°49'27"

WP	ID	TIME	SPEED	ALT	ACT
0	ADB	1010L	0		Takeoff
1	DEP	1013L	0.60M	5K	Outbound
2	RV	1018L	0.60M	25K	Regroup
3	PRE	1030L	0.75M	25K	Ingress
4	IP	1040L	0.75M	25K	IP
5	PRI	1042L	0.75M	25K	Attack
6	SEC	1052L	0.75M	25K	Attack
7	EGR	1100L	0.75M	25K	Egress
8	RET	1112L	0.70M	15K	Inbound
9	ARR	1118L	0.40M	3K	Arrival
10	RWY	1120L	0		Landing

[illegible]

MISSION: #1169



START TIME 24-JUN-2011 1000LT (0600UTC)

TAKEOFF TIME 1010LT LAND TIME 1120LT

HOME FREO AL DHAFRA 251.1AM TCN 96X AL MINHAD 250.1AM

WX CLR SR 0526LT SS 1912LT TEMP 25 C CLD 18K WIND 120 7KTS GOOD VSBY

FLIGHT

FLT	CS	T#	TCN	DLNK	LSR	WPN
Viper 3	3-1	95	15X	VR31	1655	AC,9X,2*105,WT,T,ECM,H,WT,2*105,9X,AC
	3-2	96	16X	VR32	1656	AC,9X,2*105,WT,T,ECM,H,WT,2*105,9X,AC
Viper 4	3-3	97	17X	VR41	1657	AC,9X,GBU24,WT,T,ECM,H,WT,GBU24,9X,AC
	3-4	98	18X	VR42	1658	AC,9X,GBU24,WT,T,ECM,H,WT,GBU24,9X,AC

UHF	AGCY	FREQ	VHF	AGCY	FREQ
1	Al Dhafra	251.10	1	Al Dhafra	126.50
2	Al Minhac	250.10	2	Al Minhac	118.55
3	Liwa	250.95	3	Liwa	119.30
4	Khasab	250.00	4	Khasab	124.35
5	Darkstar	256.00	5	Viper 1	131.10
6	Magic	264.00	6	Viper 2	131.20
7	Wizard	265.00	7	Viper 3	131.30
8	Texaco 3	257.30	8	Viper 4	131.40
9	Texaco 4	257.40	9	Dodge 1	132.10
10	Texaco 5	257.50	10	Dodge 2	132.20
11			11	Dodge 3	132.30
12			12	Dodge 4	132.40
13			13	Hawg 1	141.10
14			14	Hawg 2	141.20
15			15	Hawg 3	141.30
16			16	Hawg 4	141.40
17			17	Ford 1	142.10
18			18	Ford 2	142.20
19			19	Ford 3	142.30
20			20	Ford 4	142.40

FLT	A/C	TASK	A/A	FREQ
Darkstar	E-3A	AWACS		UHF CH5
Wizard	E-3A	AWACS		UHF CH7
Texaco 3	KC-135	Refuel	57X	UHF CH8
Texaco 4	KC-135	Refuel	58X	UHF CH9
Texaco 5	KC-135	Refuel	59X	UHF CH10

AFLD	FREQ	COOR
Al Minhac	250.1AM	N25°01'34" E55°22'03"
Khasab	250.0AM	N23°39'06" E53°49'27"

WP	ID	TIME	SPEED	ALT	ACT
0	ADB	1011L	0		Takeoff
1	DEP	1014L	0.60M	5K	Outbound
2	RV	1019L	0.60M	25K	Regroup
3	PRE	1030L	0.75M	25K	Ingress
4	IP	1040L	0.75M	25K	IP
5	PRI	1042L	0.75M	25K	Attack
6	SEC	1052L	0.75M	25K	Attack
7	EGR	1100L	0.75M	25K	Egress
8	RET	1112L	0.70M	15K	Inbound
9	ARR	1118L	0.40M	3K	Arrival
10	RWY	1120L	0		Landing

[illegible]

380TH AIR WING GROUP [DODGE 1,2]

MISSION: #1170

**BASIC INFO**

START TIME 24-JUN-2011 1000LT (0600UTC)

TAKEOFF TIME 1010LT LAND TIME 1120LT

HOME FREQ AL DHAFRA 251.1AM TCN 96X AL MINHAD 250.1AM

WX CLR SR 0526LT SS 1912LT TEMP 25 C CLD 18K WIND 120 7KTS GOOD VSBY

FLIGHT

FLT	CS	T#	TCN	DLNK	LSR	WPN
Dodge 1	1-1	81	21X	DE11	1661	,GBU24,,GBU24,N,CT,T,GBU24,,GBU24,
	1-2	82	22X	DE12	1662	,GBU24,,GBU24,N,CT,T,GBU24,,GBU24,
Dodge 2	2-1	83	23X	DE21	1663	,GBU24,,GBU24,N,CT,T,GBU24,,GBU24,
	2-2	84	24X	DE22	1664	,GBU24,,GBU24,N,CT,T,GBU24,,GBU24,

COMMS LADDER

UHF	AGCY	FREQ	VHF	AGCY	FREQ
1	Al Dhafra	251.10	1	Al Dhafra	126.50
2	Al Minhac	250.10	2	Al Minhac	118.55
3	Liwa	250.95	3	Liwa	119.30
4	Khasab	250.00	4	Khasab	124.35
5	Darkstar	256.00	5	Viper 1	131.10
6	Magic	264.00	6	Viper 2	131.20
7	Wizard	265.00	7	Viper 3	131.30
8	Texaco 3	257.30	8	Viper 4	131.40
9	Texaco 4	257.40	9	Dodge 1	132.10
10	Texaco 5	257.50	10	Dodge 2	132.20
11			11	Dodge 3	132.30
12			12	Dodge 4	132.40
13			13	Hawg 1	141.10
14			14	Hawg 2	141.20
15			15	Hawg 3	141.30
16			16	Hawg 4	141.40
17			17	Ford 1	142.10
18			18	Ford 2	142.20
19			19	Ford 3	142.30
20			20	Ford 4	142.40

SUPPORT

FLT	A/C	TASK	A/A	FREQ
Darkstar	E-3A	AWACS		UHF CH5
Wizard	E-3A	AWACS		UHF CH7
Texaco 3	KC-135	Refuel	57X	UHF CH8
Texaco 4	KC-135	Refuel	58X	UHF CH9
Texaco 5	KC-135	Refuel	59X	UHF CH10

ALT AFLD

AFLD	FREQ	COOR
Al Minhac	250.1AM	N25°01'34" E55°22'03"
Khasab	250.0AM	N23°39'06" E53°49'27"

FLIGHT WAYPOINT

WP	ID	TIME	SPEED	ALT	ACT
0	ADB	1012L	0		Takeoff
1	DEP	1015L	0.60M	5K	Outbound
2	RV	1020L	0.60M	25K	Regroup
3	PRE	1032L	0.80M	25K	Ingress
4	IP	1040L	0.80M	25K	IP
5	PRI	1043L	0.80M	25K	Attack
6	SEC				Attack
7	EGR	1100L	0.75M	25K	Egress
8	RET	1115L	0.70M	15K	Inbound
9	ARR	1121L	0.40M	3K	Arrival
10	RWY	1123L	0		Landing

TARGET WAYPOINT

#	ID	COORD	ALT (FT)
1	B1	N 26°32.835' E 54°52.76'	12
2	B2	N 26°32.861' E 54°52.80'	12
3	B3	N 26°32.890' E 54°52.84'	12
4	B4	N 26°32.919' E 54°52.88'	12
5	B5	N 26°32.850' E 54°52.98'	0
6	B6	N 26°32.885' E 54°53.03'	0
7	B7	N 26°32.961' E 54°53.15'	0
8	B8	N 26°32.894' E 54°53.10'	0
9	C1	N 27°00.725' E 54°17.78'	1074
10	C2	N 27°00.748' E 54°17.71'	1071
11	C3	N 27°00.808' E 54°17.77'	1072
12	C4	N 27°00.774' E 54°17.81'	1074
13	C5	N 27°00.948' E 54°17.94'	1073
14	C6	N 27°00.990' E 54°17.97'	1072
15	C7	N 27°01.018' E 54°17.99'	1072
16	C8	N 27°00.916' E 54°17.99'	1076

380TH AIR WING GROUP [FORD 1,2]

MISSION: #1171

**BASIC INFO**

START TIME 24-JUN-2011 1000LT (0600UTC)

TAKEOFF TIME 1010LT LAND TIME 1120LT

HOME FREQ AL DHAFRA 251.1AM TCN 96X AL MINHAD 250.1AM

WX CLR SR 0526LT SS 1912LT TEMP 25 C CLD 18K WIND 120 7KTS GOOD VSBY

FLIGHT

FLT	CS	T#	TCN	DLNK	LSR	WPN
Ford 1	1-1	201		FD11		AC,WT,AC,AB,AB,CT,AB,AB,AC,WT,AC
	1-2	202		FD12		AC,WT,AC,AB,AB,CT,AB,AB,AC,WT,AC
Ford 2	2-1	203		FD21		AC,WT,AC,AB,AB,CT,AB,AB,AC,WT,AC
	2-2	204		FD22		AC,WT,AC,AB,AB,CT,AB,AB,AC,WT,AC

COMMS LADDER

UHF	AGCY	FREQ	VHF	AGCY	FREQ
1	Al Dhafra	251.10	1	Al Dhafra	126.50
2	Al Minhac	250.10	2	Al Minhac	118.55
3	Liwa	250.95	3	Liwa	119.30
4	Khasab	250.00	4	Khasab	124.35
5	Darkstar	256.00	5	Viper 1	131.10
6	Magic	264.00	6	Viper 2	131.20
7	Wizard	265.00	7	Viper 3	131.30
8	Texaco 3	257.30	8	Viper 4	131.40
9	Texaco 4	257.40	9	Dodge 1	132.10
10	Texaco 5	257.50	10	Dodge 2	132.20
11			11	Dodge 3	132.30
12			12	Dodge 4	132.40
13			13	Hawg 1	141.10
14			14	Hawg 2	141.20
15			15	Hawg 3	141.30
16			16	Hawg 4	141.40
17			17	Ford 1	142.10
18			18	Ford 2	142.20
19			19	Ford 3	142.30
20			20	Ford 4	142.40

SUPPORT

FLT	A/C	TASK	A/A	FREQ
Darkstar	E-3A	AWACS		UHF CH5
Wizard	E-3A	AWACS		UHF CH7
Texaco 3	KC-135	Refuel	57X	UHF CH8
Texaco 4	KC-135	Refuel	58X	UHF CH9
Texaco 5	KC-135	Refuel	59X	UHF CH10

ALT AFLD

AFLD	FREQ	COOR
Al Minhac	250.1AM	N25°01'34" E55°22'03"
Khasab	250.0AM	N23°39'06" E53°49'27"

FLIGHT WAYPOINT

WP	ID	TIME	SPEED	ALT	ACT
0	AMB	1010L	0		Takeoff
1	DEP	1012L	0.60M	5K	Outbound
2	RV	1016L	0.60M	25K	Regroup
3	PRE	1023L	0.85M	35K	Ingress
4	STA	1028L	0.95M	35K	Check In
5	CAP		0.80M	35K	CAP
6	CAP		0.80M	35K	CAP
7	EGR	1135L	0.75M	25K	Egress
8	RET	1145L	0.70M	15K	Inbound
9	ARR	1150L	0.40M	3K	Arrival
10	RWY	1153L	0		Landing

TARGET WAYPOINT

WP	ID	COORD	ALT	RMKS
11				
12				
13				
14				
15				
16				
17				
18				
19				
20				
21				
22				
23				
24				
25				
26				
27				
28				
29				

380TH AIR WING GROUP [HAWG 1,2]

MISSION: #1171

**BASIC INFO**

START TIME 24-JUN-2011 1000LT (0600UTC)

TAKEOFF TIME 0740LT LAND TIME 0902LT

HOME FREQ AL DHAFRA 251.1AM TCN 96X AL MINHAD 250.1AM

WX CLR SR 0526LT SS 1912LT TEMP 25 C CLD 18K WIND 120 7KTS GOOD VSBY

FLIGHT

FLT	CS	T#	TCN	DLNK	LSR	WPN
Hawg 1	1-1	171	31X	HG11	1671	2*9M,T,3*65D,Rkts,,,,Rkts,3*65D,Rkts,ECM
	1-2	172	32X	HG12	1672	2*9M,T,3*65D,Rkts,,,,Rkts,3*65D,Rkts,ECM
Hawg 2	2-1	173	33X	HG21	1673	2*9M,T,3*65D,Rkts,,,,Rkts,3*65D,Rkts,ECM
	2-2	174	34X	HG22	1674	2*9M,T,3*65D,Rkts,,,,Rkts,3*65D,Rkts,ECM

COMMS LADDER

UHF	AGCY	FREQ	VHF	AGCY	FREQ
1	Al Dhafra	251.10	1	Al Dhafra	126.50
2	Al Minhac	250.10	2	Al Minhac	118.55
3	Liwa	250.95	3	Liwa	119.30
4	Khasab	250.00	4	Khasab	124.35
5	Darkstar	256.00	5	Viper 1	131.10
6	Magic	264.00	6	Viper 2	131.20
7	Wizard	265.00	7	Viper 3	131.30
8	Texaco 3	257.30	8	Viper 4	131.40
9	Texaco 4	257.40	9	Dodge 1	132.10
10	Texaco 5	257.50	10	Dodge 2	132.20
11			11	Dodge 3	132.30
12			12	Dodge 4	132.40
13			13	Hawg 1	141.10
14			14	Hawg 2	141.20
15			15	Hawg 3	141.30
16			16	Hawg 4	141.40
17			17	Ford 1	142.10
18			18	Ford 2	142.20
19			19	Ford 3	142.30
20			20	Ford 4	142.40

SUPPORT

FLT	A/C	TASK	A/A	FREQ
Darkstar	E-3A	AWACS		UHF CH5
Wizard	E-3A	AWACS		UHF CH7
Texaco 3	KC-135	Refuel	57X	UHF CH8
Texaco 4	KC-135	Refuel	58X	UHF CH9
Texaco 5	KC-135	Refuel	59X	UHF CH10

ALT AFLD

AFLD	FREQ	COOR
Al Minhac	250.1AM	N25°01'34" E55°22'03"
Khasab	250.0AM	N23°39'06" E53°49'27"

FLIGHT WAYPOINT

WP	ID	TIME	SPEED	ALT	ACT
0	AMB	1012L	0		Takeoff
1	DEP	1015L	0.40M	5K	Outbound
2	RV	1020L	0.40M	15K	Regroup
3	PRE	1030L	0.40M	15K	Ingress
4	IP	1040L	0.40M	15K	IP
5	BEG	1045L	0.40M	10K	Attack
6	END				Attack
7	EGR	1030L	0.40M	15K	Egress
8	RET	1047L	0.40M	15K	Inbound
9	ARR	1052L	0.40M	3K	Arrival
10	RWY	1055L	0		Landing

TARGET WAYPOINT

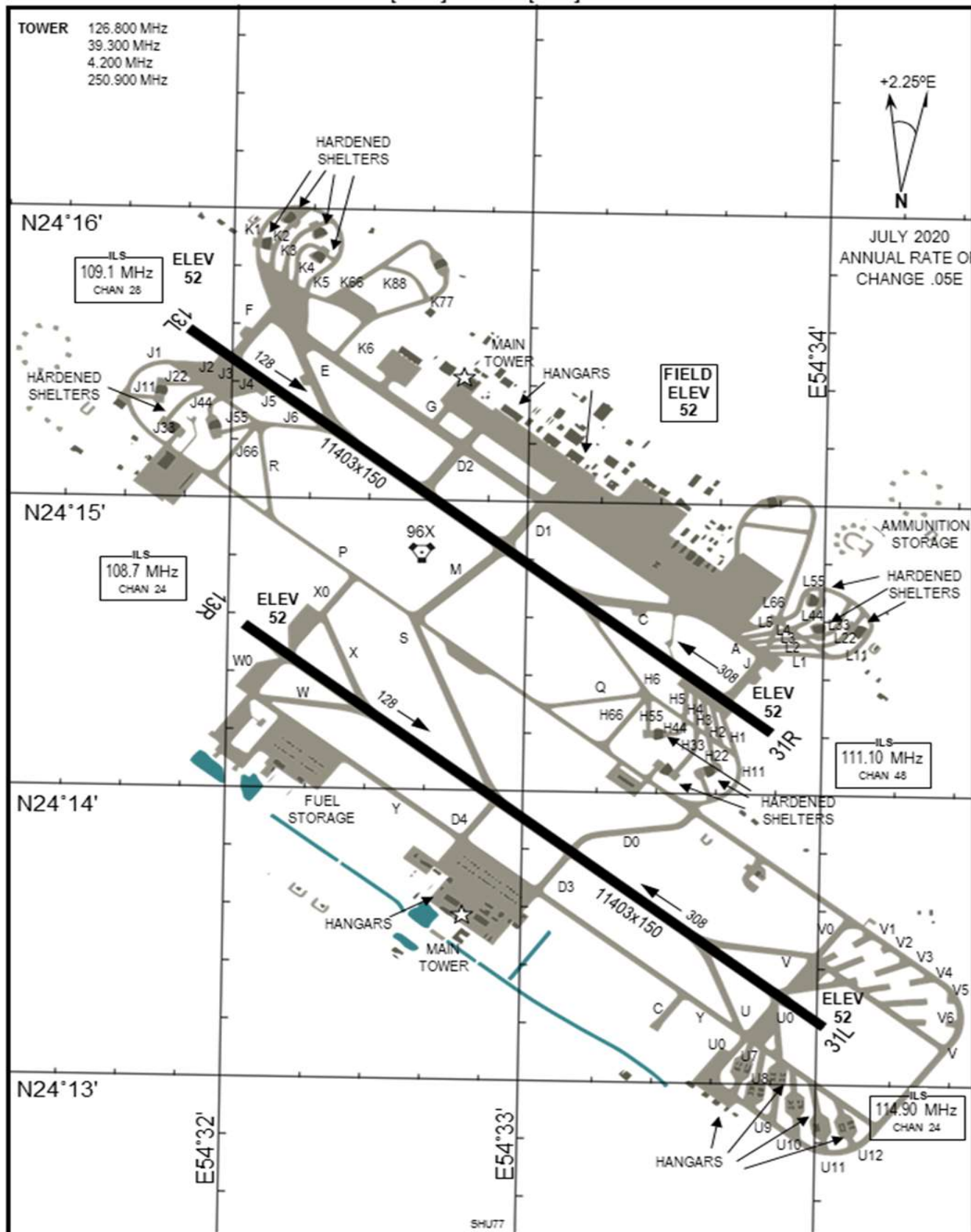
WP	ID	COORD	ALT	RMKS
11				
12				
13				
14				
15				
16				
17				
18				
19				
20				
21				
22				
23				
24				
25				
26				
27				
28				
29				



AIRPORT DIAGRAM

[USAF] AFD-3351 [ICAO]

AL DHAFRA AIRBASE (OMAM)
ABU DHABI, UNITED ARAB EMIRATES



AIRPORT DIAGRAM

NOT FOR REAL NAVIGATION

ABU DHABI, UNITED ARAB EMIRATES
AL DHAFRA AIRBASE (OMAM)

Source: CombatWombat's Airfield Diagrams: Persian Gulf

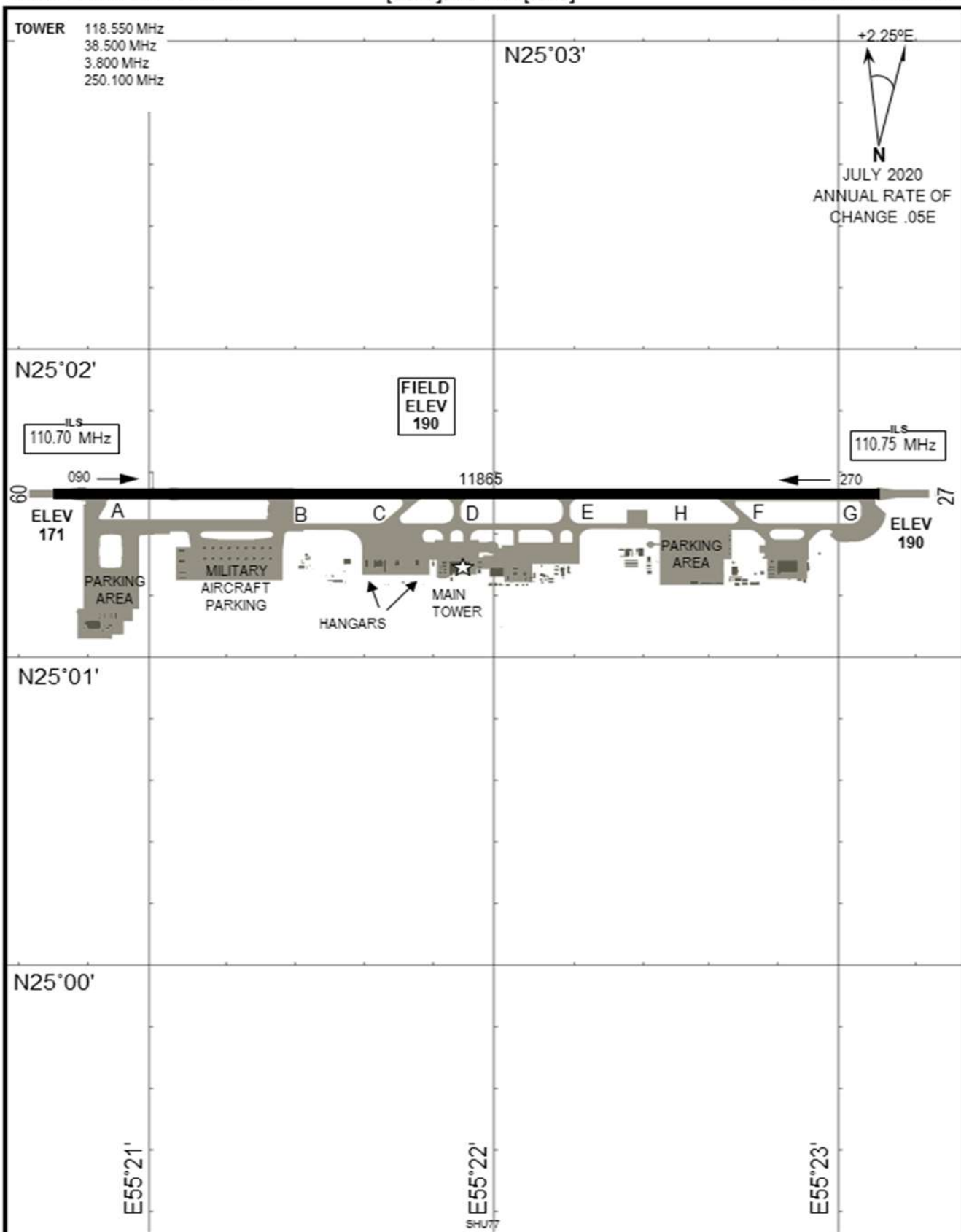


AIRPORT DIAGRAM

[USAF] AFD-3351 [ICAO]

AL MINHAD AIRBASE (OMDM)

AL MINHAD, DUBAI, UAE



AIRPORT DIAGRAM

NOT FOR REAL NAVIGATION

AL MINHAD, DUBAI, UAE
AL MINHAD AIRBASE (OMDM)

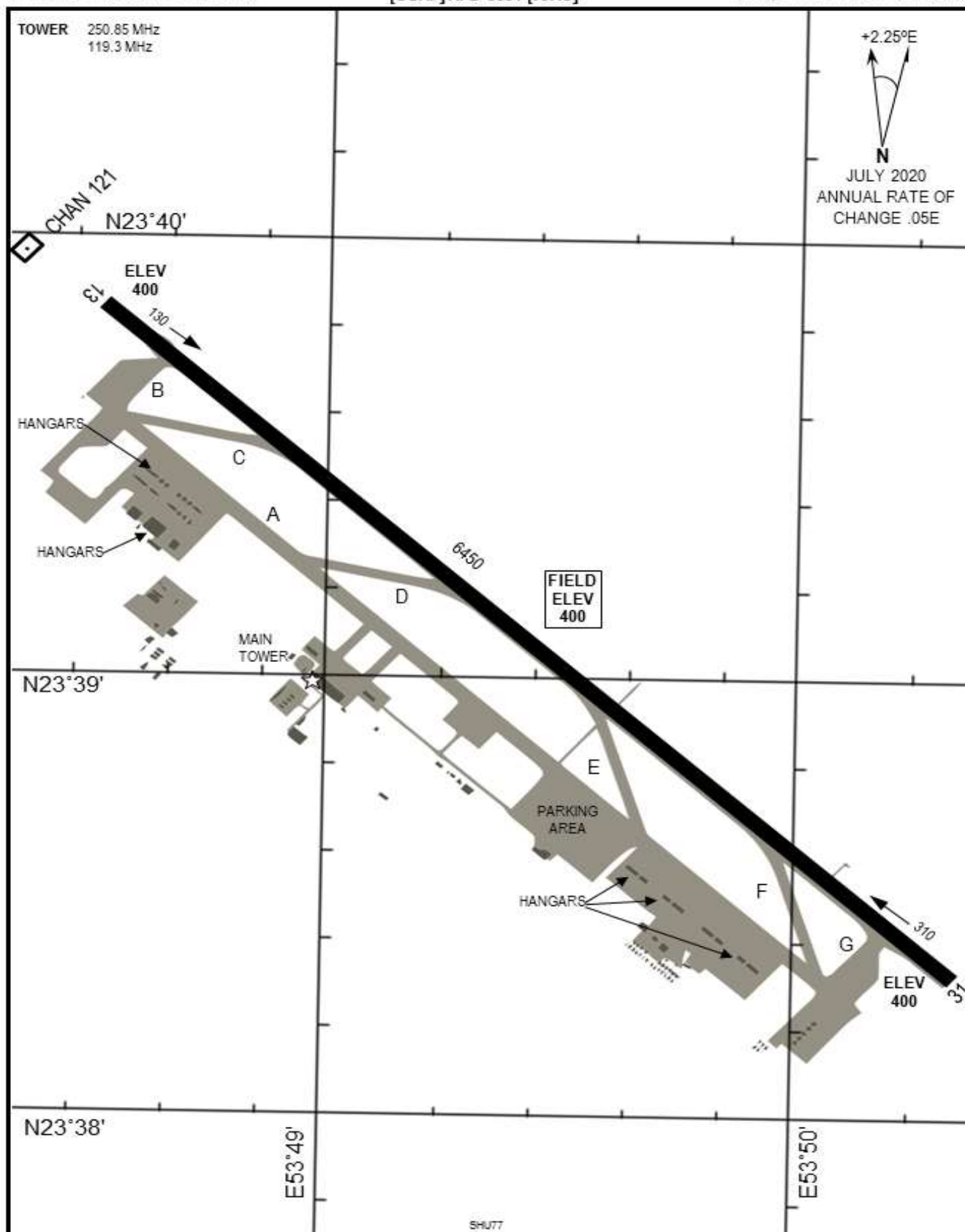
Source: CombatWombat's Airfield Diagrams: Persian Gulf



AIRPORT DIAGRAM

[USAF] AFD-3351 [ICAO]

LIWA AIRBASE (OMLW)
LIWA, UNITED ARAB EMIRATES



AIRPORT DIAGRAM

NOT FOR REAL NAVIGATION

AL MAKTOUM, JEBEL ALI, UAE

AL MAKTOUM INTERNATIONAL(OMDW)

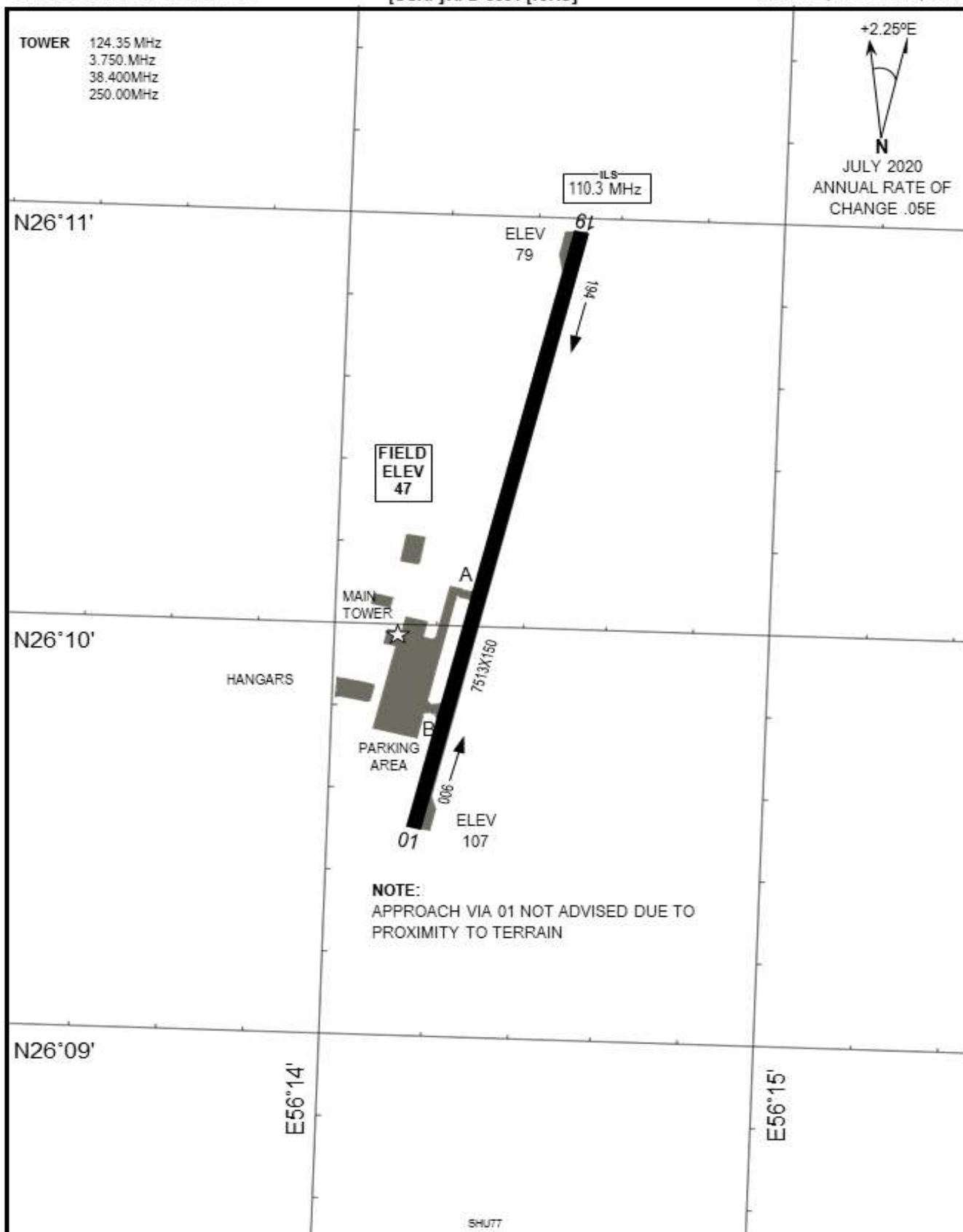
Source: CombatWombat's Airfield Diagrams: Persian Gulf



AIRPORT DIAGRAM

[USAF] AFD-3351 [ICAO]

KHASAB AIRBASE (OOKB)
KHASAB, MUSNDAM, OMAN



AIRPORT DIAGRAM

NOT FOR REAL NAVIGATION

KHASAB, MUSNDAM, OMAN
KHASAB AIRBASE (OOKB)

Source: CombatWombat's Airfield Diagrams: Persian Gulf



AIR OPERATION CHART



FLIGHT PLAN





TARGET IMAGE (PKG#1168 PRIMARY - IRAN 11TH ARTILLERY GROUP)



TARGET IMAGE (PKG#1168 SECONDARY - IRAN 12TH ARTILLERY GROUP)

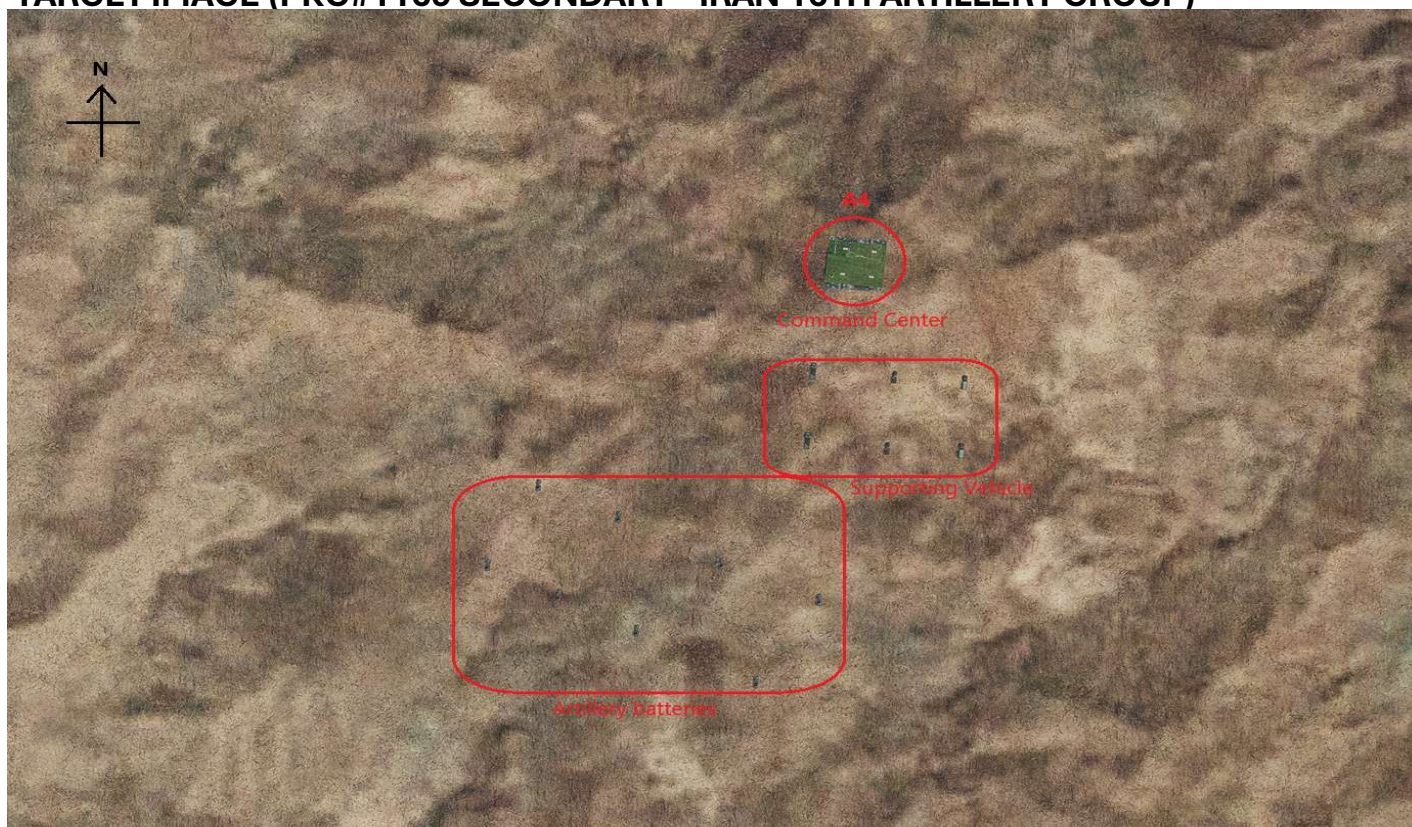




TARGET IMAGE (PKG#1169 PRIMARY - IRAN 15TH ARTILLERY GROUP)

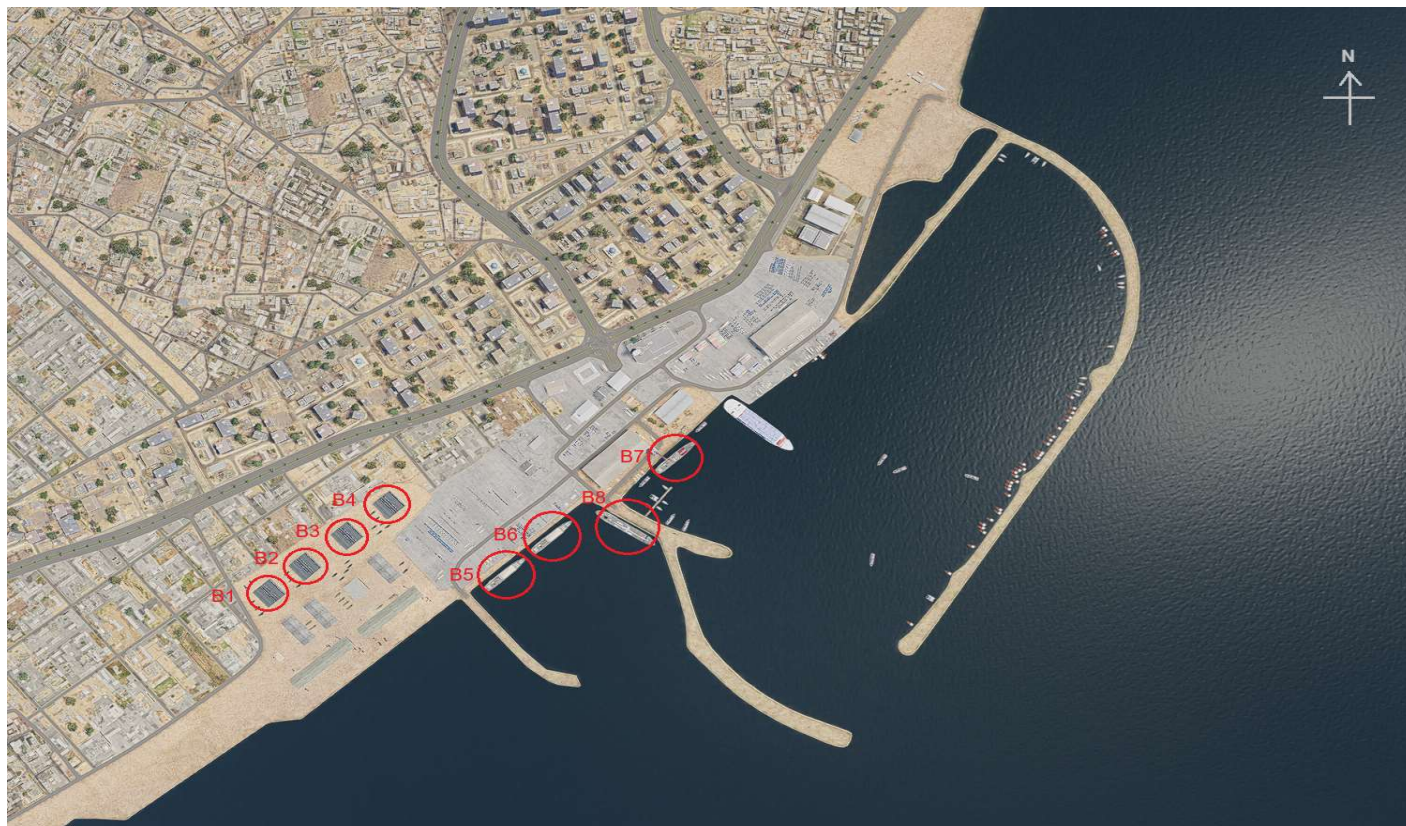


TARGET IMAGE (PKG#1169 SECONDARY - IRAN 16TH ARTILLERY GROUP)





TARGET IMAGE (PKG#1170 PRIMARY - BANDAR LENGEH PORT)

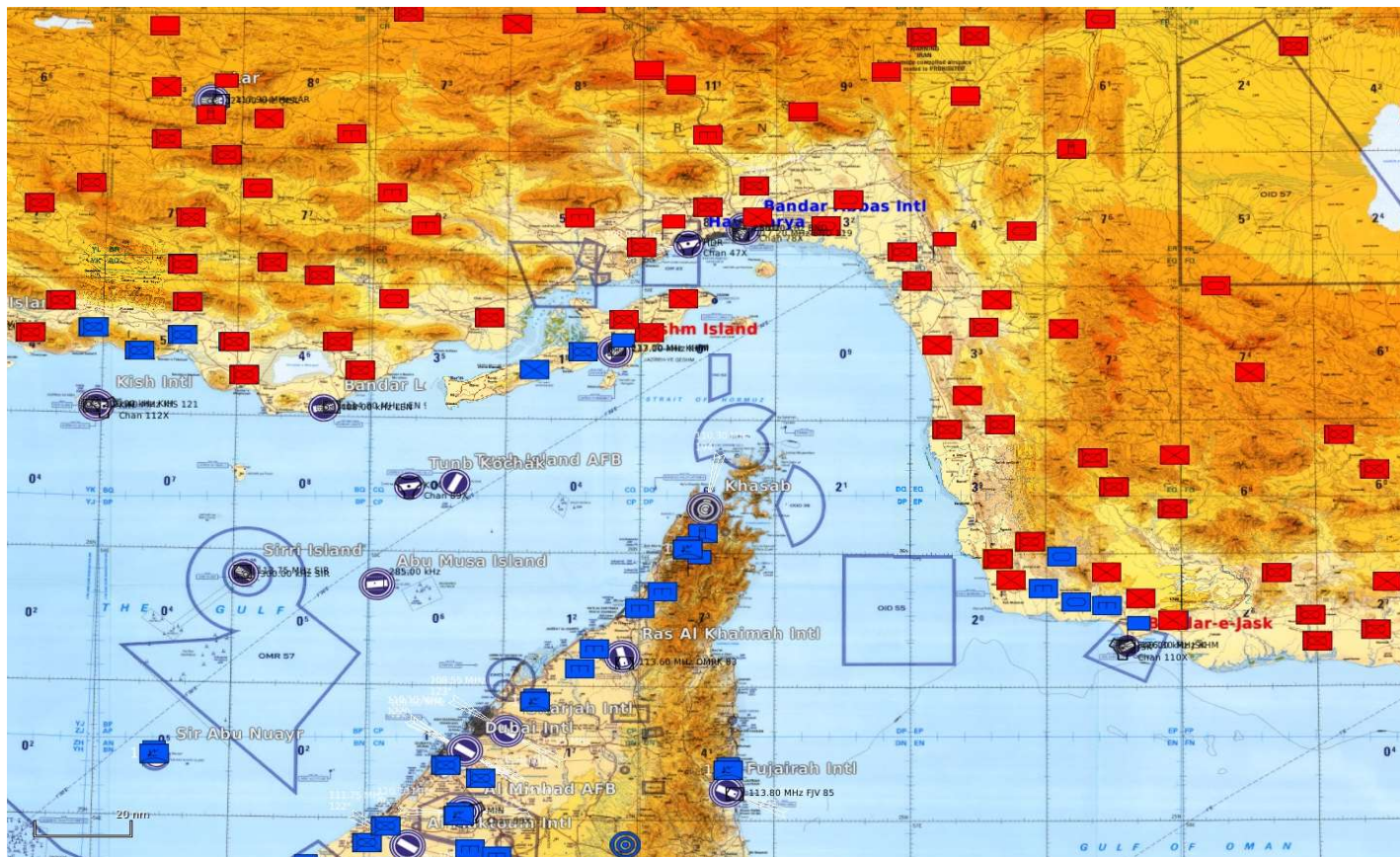


TARGET IMAGE (PKG#1170 SECONDARY - JENAH WEAPON FACTORY)





GROUND OPERATION UPDATE



INTERDICTION PLAN (PKG#1171 - IRAN 5TH ARMORED DIVISION)

