



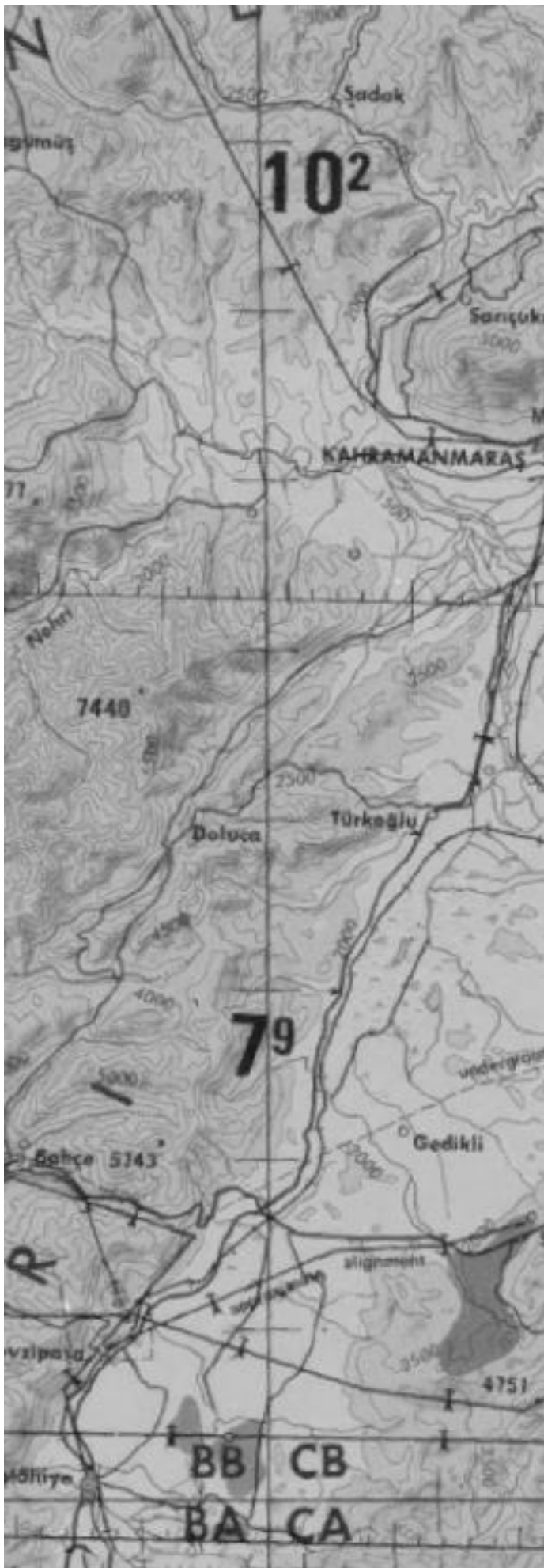
# 10 PERCENT TRUE

---

## SEDLO

*On Call CAS*

*XR-352-P*



## TABLE OF CONTENTS

Mission Objectives.....	3
Weather and NOTAMS.....	3
Intelligence Update.....	5
Mission Planning .....	6
Threats .....	6
Rules of Engagment.....	7
Mission Data.....	8



# MISSION OBJECTIVES

---

Today's mission (XR-352-P) has three main objectives:

- Provide On Call CAS support in the southern Section of the AO from 06:30z to 09:00z.
- Train with 93<sup>rd</sup> ARW out of Fairchild AFB, newly arrived in theatre.
- Familiarization with Local area and AO procedures

# WEATHER AND NOTAMS

---

## OVERVIEW

A weakening high-pressure system overhead the southern AO will slowly give way to a warm front approaching from the Mediterranean. Weather throughout the AO is good VFR, light winds, visibility more than 10 miles and ceilings around 10,000ft.

## METAR/TAF

MUWAFFAQ SALT I (OJMS) METAR/TAF

METAR OJMS 060400Z 30012KT 10SM SCT100 10/1 Q1013 2992

TAF OMJF 060404 P10SM SCT100 FM 061000 30020KT P7SM HZ BKN100

H4 AIRBASE (IQ-0400) METAR/TAF

METAR IQ-0400 060400Z 34002KT 10SM SCT110 8/1 Q1013 2992

TAF IQ-0400 060404 P10SM SCT110 FM 061000 30030KT P3SM HZ BKN60

H3 AIRBASE (IQ-0020) METAR/TAF

METAR IQ-0020 060400Z 01011KT 10SM BKN100 6/1 Q1013 2992

TAF IQ-0020 060404 P10SM SCT110 FM 061000 30030KT P3SM HZ BKN60



## Operation Inherent Resolve

*On-Call CAS*

### NOTAMS

C007 - OJMS TAXIWAY C, C3, C4 CLOSED UFN

C036 - OJMS TACAN (10X, AJQ) U/S FROM 0100Z-0400Z DEC.6

C991 - OJMS LIGHTING RWY 31 TO READ: AW INSTEAD OF AO

C216 – OJMS VHF TWR FREQ 119.7 U/S UFN. CTC TWR 121.0 UFN

C217 – OJMS VHF ATIS FREQ 129.75 U/S UFN.

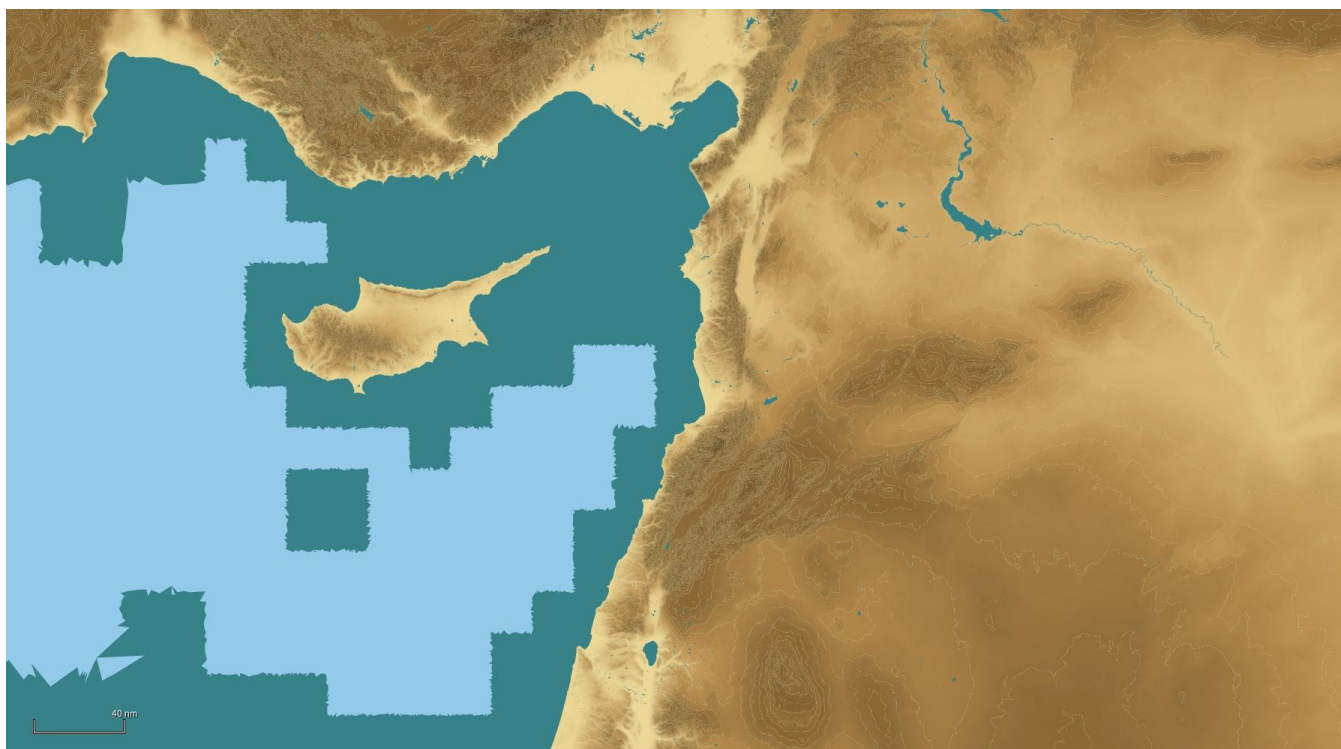
### LTAG WEATHER NOTES

**Flight Rules – VFR**

**Freezing Level – 4500**

**Contrail Level – 24,000**

**Birdwatch Level – Moderate**



## INTELLIGENCE UPDATE

---

### OVERVIEW 06 DECEMBER 2016 AT 01:00 ZULU

Daesh fighters are expected to make a final move on the town of Palmyra this morning after taking the airport late last night.

The Syrian Army has retreated to the Palmyra Army Depot and are expected to hold the base against the current Daesh attack. The Palmyra Army Depot is a suspected WMD storage area, and it's in Syria's best interest to secure these weapons from being compromised.

The State Department and OGA have reached out to the Syrian leadership to offer assistance in securing the WMD but all offers have been declined.

The COALITION partners have determined that WMD falling into the hands of DAESH is to be avoided at all cost.

---

The Russian Navy Task Force centered around the Cruiser VARYAG is expected to make port at Tartus this afternoon. Refueling and replenishment operations are expected to take 12 hours.

---

RIVET JOINT has detected indications of a new SA-3 battery located at TIYAS airbase. The proximity to the FEBA near Palmyra indicates that the Syrians intend to hold TIYAS in the face of any organized Daesh attack.

---

The new teletype link (POLECAT) between the Syrian Ministry of Defense, RUAFHQ and JACKAL is now operational. This development is meant to ensure positive communications between military leadership on all sides of the situation in Syria.

---

# MISSION PLANNING

---

**Mission Number** – XR-352-P

Departure: VFR Departure runway 31 .

Afterburner: Yes

Departure Instructions: VFR 31 Dep **RIGHT** turn heading 090 maintain 6000.

- Ford 51 will depart runway 31 with an immediate right turn heading 090. Expect to be pushed to FOCUS control leaving 5000ft.
- Rendezvous and refuel with Texaco 51 at Steer Point 2 (ADDER).
- Take Up On-Call CAS with an orbit overhead Steer Point 3 (Al-Tanf)
- VUL time is 0630-0900 Z.
- Following VUL time, TEXACO 51 will be available for refueling if desired.
- Expect the visual approach and overhead break runway 31.
- When overhead Syrian Territory, ensure you are **EAST** of the 38 E line.

---

# THREATS

---

The Syrian Air Force has increased operations dramatically in the last 24 hours. Yesterday, they carried out multiple airstrikes in defense of the city of Palmyra. SU-24 and MiG-29 attacks were observed, with all operations out of the TIYAS airbase.

Russian SU-35 CAP aircraft have been observed in and around the port of TARTUS, which coincides with the expected arrival of their naval task force later today.

Syrian Air Force has MiG-29 on alert at TIYAS and SHAYRAT airbases, all believed to be in a 15-minute alert status.

Russian SU-35 are on 5-minute alert at Latakia Airbase.

---

## Operation Inherent Resolve

### *On-Call CAS*

Syrian IADS network is still operational. Damascus is defended by long range SA-5 and SA-2 batteries.

SA-2, SA-3 and SA-6 batteries near the airbase at TIYAS are operational.

High volumes of AAA and MANPADS expected throughout the AO.

## RULES OF ENGAGEMENT

---

ROE Weapons Tight – Do not fire unless under direct attack or authorized via JACKAL or FOCUS control.

## MISSION DATA

10PCT INHERENT RESOLVE					
FREQUENCY LINEUP					
PRIME			AUX		
01	287.5	ATIS	01	245.85	ATIS
02	363.6	GND	02	327.975	GND
03	250.4	TWR	03	268.225	TWR V
04	227.9	DEP	04	335.100	DEP
05	319.9	ARR	05	230.45	APP
06	337.3	SOF	06	351.850	JOKE
07	297.5	GCI-1	07	244.300	GCI1 B/U
08	382.8	GCI-2	08	394.475	GCI2 B/U
09	276.1	AMMN CTR	08	238.0	AMMN CTR
10	319.5	JACKAL UHF	10	243.45	JACKAL VHF
11	360.7	DAD	11	327.775	JOKE
12	315.1	SQN OPS	12	381.950	BASEOPS
13	277.6	FUNNY	13	268.175	FACT
14	282.2	FOCUS B/U	14	329.825	FOCUS B/U
15	310.525	BADGER	15	282.8	RESCUE PR
16	240.225	HQ NET-2	16	249.175	TAC-2
17	320.350	HQ NET-3	17	316.925	TAC-3
18	290.425	HQ NET-4	18	339.125	TAC-4
19	370.575	HQ NET-5	19	256.925	TAC-5
20	300.050	HQ WOD	20	365.625	SQN OPS



## Operation Inherent Resolve

On-Call CAS

FLIGHT DATA CARD CF-18					
CALLSIGN	ROLE	JOKER	STEP	TAXI	NOTES
FORD 5		7500	05:00 L	05:45 L	
MISSION NO.	TOT	BINGO	CHECK IN	T/O	
XR-352-P		4500	05:30 L	05:50 L	
CALLSIGN	PILOTS	TAIL	HNGR	A/A TCN	
FORD 51	LOLA/SPEW	366	28	01 Y	
FORD 52	SCOTTY/ZEE	751	29	64 Y	
V1	VR	V2	SETO	LND DIST	
150	175	190	210		
NOTES		AGENCY	CHANNEL	PRESET	FREQ
BULLSEYE CROWN SP.7 N 34°28.829' E 36°55.790'		FOCUS	HQ-1	16 PRIME	240.225
		TACTICAL	AUX 18	18 AUX	339.125
		TEX 51		17 PRIME	320.35
		RESCUE			282.2
		H3NW TWR			262.3
		H4 TWR			319.7

## Operation Inherent Resolve

On-Call CAS

10PCT INHERENT RESOLVE CF-18						
MISSION DATA CARD						
P A C K A G E	CALLSIGN	COM1	COM2	D/L	TACAN	NOTES
	FORD 5	HQ-2	AUX18	LINK16		
A A R	CALLSIGN	TACAN	ALT	PRI	SEC	KY FILL
	TEXACO 51	51X	24000	HQ NET-3		
A E W	CALLSIGN	TACAN	H/Q	PRI	SEC	KY FILL
	FOCUS	N/A	Y	HQ NET-2	240.225	1
T A R G E T	PRI CODE			SEC CODE		
	TOT			TOT		
	ALTIMETER	29.92		ALT.SET:		
	COORD			COORD		
	ELEV			ELEV		
	BMB WIND			BMB WIND		
	BINGO FUEL			BINGO		
S A R	CALLSIGN	TYPE	PRI	SEC	TACAN	SATCOM
	SANDY 1	A-10C	282.8			
	JOLLY 1	HH-60	282.8			

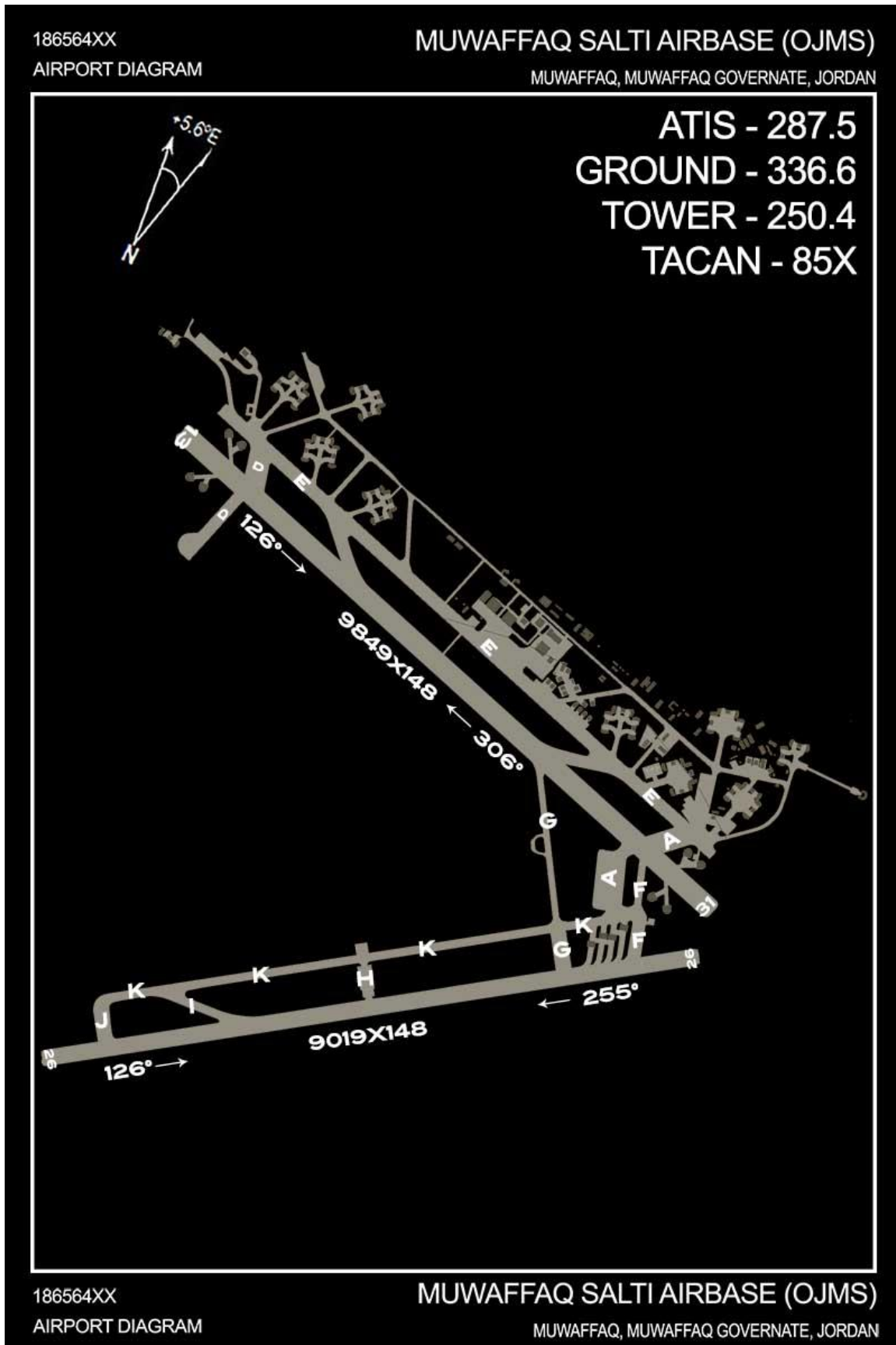
## Operation Inherent Resolve

On-Call CAS

10PCT			
TAD		TAD	
TAD-101	370.850	TAD-121	346.325
TAD-102	355.300	TAD-122	388.850
TAD-103	255.625	TAD-123	355.575
TAD-104	231.100	TAD-124	289.125
TAD-105	306.375	TAD-125	351.200
TAD-106	250.125	TAD-126	337.500
TAD-107	396.550	TAD-127	398.700
TAD-108	229.200	TAD-128	294.050
TAD-109	325.419	TAD-129	254.325
TAD-110	271.050	TAD-130	296.479
TAD-111	391.125	TAD-131	257.900
TAD-112	324.100	TAD-132	287.750
TAD-113	389.300	TAD-133	310.525
TAD-114	250.075	TAD-134	284.350
TAD-115	254.475	TAD-135	271.900
TAD-116	278.000	TAD-136	294.350
TAD-117	240.225	TAD-137	386.325
TAD-118	353.200	TAD-138	292.450
TAD-119	247.075	TAD-139	247.075
TAD-120	355.550	TAD-140	355.400

## Operation Inherent Resolve

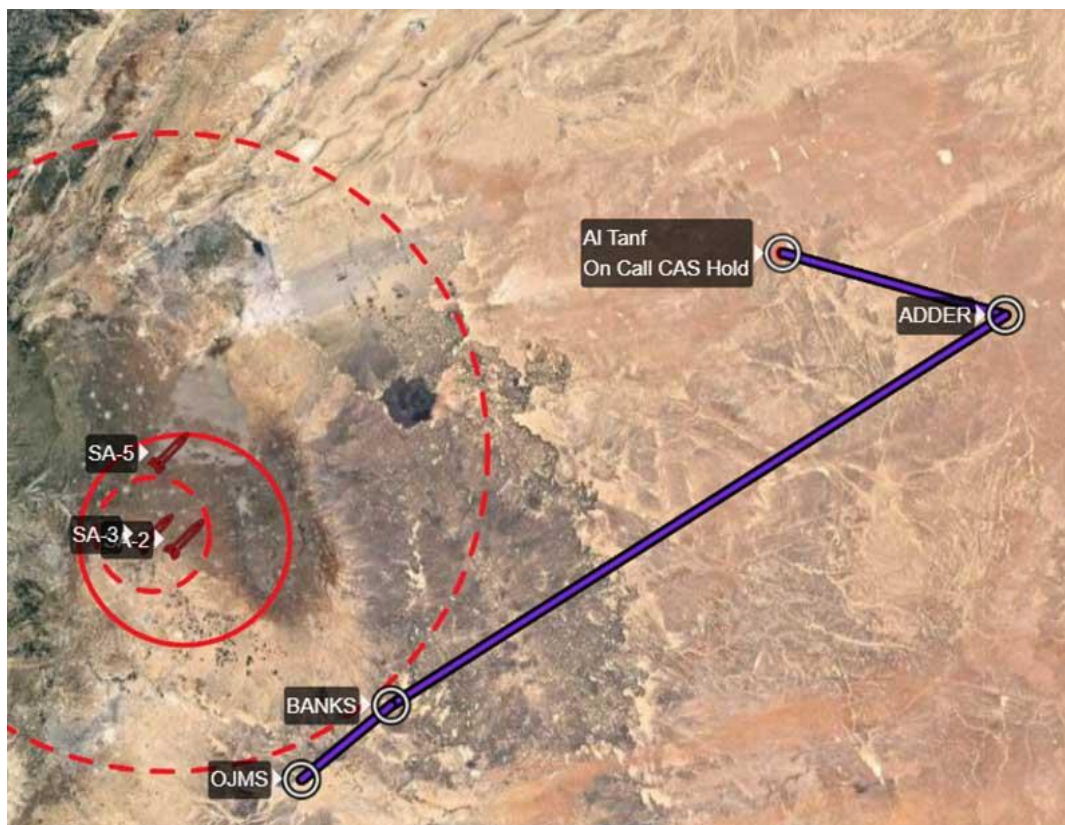
On-Call CAS





# Operation Inherent Resolve

## On-Call CAS



10 PERCENT TRUE

ON CALL CAS

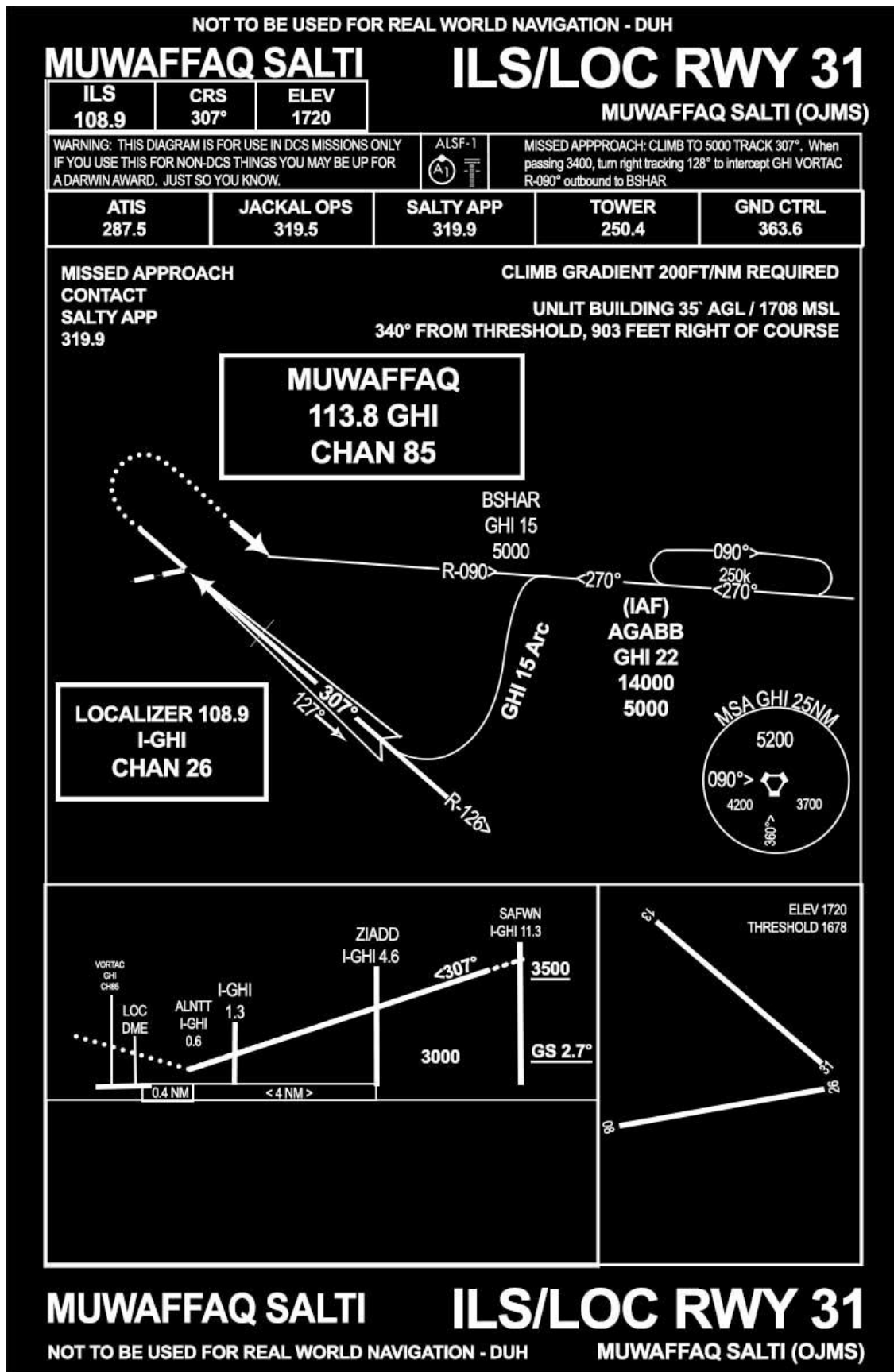
WP	FROM/TO	ALT	TRUE HDG	MAG HDG	DIST	G/SPEED	TIME ENROUTE	LAT/LONG
0	OJMS	/						N 32°49.661' E 36°47.859'
1	BANKS	24000	50	045	22.4	350	03:50	N 32° 04.201' E 36°47.857'
2	ADDER	24000	56	051	139	500	16:41	N 33°18.560' E 39°27.575'
3	AL TANF	24000	285	280	37	400	05:33	N 33°30.450' E 38°36.985'
4	ADDER	24000	105	100	37	500	04:26	N 33°18.560' E 39°27.575'
5	BANKS	24000	238	233	139	500	16:41	N 32° 04.201' E 36°47.857'
6	OJMS	/	229	224	22.4	350	03:50	N 32°49.661' E 36°47.859'
7								
8	BULLSEYE							N 34°28.829' E 36°55.790'





# Operation Inherent Resolve

On-Call CAS



## ACKNOWLEDGMENTS

---

I would like to thank the following people for providing voice-over work.

HoneyBadger

T-Money

DeadMike

Mace

pooledh18

Florence

nucks\_404\_epe

=Foxtrot=

Paladin1CD

HoshoDesu

Apologies if I've left anybody out!