

**BASIC INFO**

START TIME 1-JUL-2011 1400LT (1000UTC)
 SCHED LAU TIME 1410LT CASE I DEP LOC N2458E5807
 EXP REC TIME 1600LT CASE I REC LOC N2448E5833
 HOME FREQ 305AM TCN 71X ILS 11 LINK4 336
 WX CLR SR 0528LT SS 1913LT TEMP 31C QNH 2990 WIND 283 10KTS SEA 2 GD VSBY

FLIGHT

| FLT | CS | T# | A/A | DLNK | LASER | WPN |
|--------|----------|-----|-----|------|-------|-------------------------------------|
| Hawk 1 | Hawk 1-1 | 211 | 11X | HK11 | 1681 | 9X,84LG,WT,120C,CT,AFLIR,WT,84LG,9X |
| | Hawk 1-2 | 212 | 12X | HK12 | 1682 | 9X,84LG,WT,120C,CT,AFLIR,WT,84LG,9X |
| | Hawk 1-3 | 213 | 13X | HK13 | 1683 | 9X,84LG,WT,120C,CT,AFLIR,WT,84LG,9X |
| | Hawk 1-4 | 214 | 14X | HK14 | 1684 | 9X,84LG,WT,120C,CT,AFLIR,WT,84LG,9X |
| Hawk 2 | Hawk 2-1 | 215 | 21X | HK21 | 1685 | 9X,84LG,WT,120C,CT,AFLIR,WT,84LG,9X |
| | Hawk 2-2 | 216 | 22X | HK22 | 1686 | 9X,84LG,WT,120C,CT,AFLIR,WT,84LG,9X |
| | Hawk 2-3 | 217 | 23X | HK23 | 1687 | 9X,84LG,WT,120C,CT,AFLIR,WT,84LG,9X |
| | Hawk 2-4 | 218 | 24X | HK24 | 1688 | 9X,84LG,WT,120C,CT,AFLIR,WT,84LG,9X |

PACKAGE

| FLT | AC | NO. | TASK |
|--------|---------|-----|-----------------|
| Hawk 1 | F/A-18C | 4 | Pinpoint Strike |
| Hawk 2 | F/A-18C | 4 | Pinpoint Strike |

SUPPORT

| FLT | AC | TASK | A/A | CH | RMRK |
|----------|--------|--------|-----|----|----------|
| Magic | E-2D | AWACS | | 2 | Strike |
| Darkstar | E-3A | AWACS | | 4 | Darkstar |
| Texaco | KC-135 | Refuel | 53X | 10 | FL250 |
| Arco | KC-130 | Refuel | 54X | 11 | FL210 |
| Shell 1 | S-3B | Refuel | 51X | 8 | Standby |
| Shell 2 | S-3B | Refuel | 52X | 9 | Standby |

FLIGHT PLAN (HAWK 1, 2)

| WP | NAME | TIME | SPEED | ALT | ACT |
|------|----------|-------|-------|-----|----------|
| 0 | LAU | 1410L | | | Launch |
| 1 | RV | 1420L | 0.60M | 25K | Regroup |
| 2 | ROCK | 1445L | 0.80M | 30K | Check in |
| 3 | IP | 1450L | 0.70M | 20K | Fence in |
| 4-11 | A/B 4-11 | | | | Attack |
| 12 | EGR | 1530L | 0.75M | 25K | Egress |
| 13 | REC | 1600L | 0 | | Landing |

RADIO COMMS

| CH | CODE | AGCY | FREQ |
|----|----------|----------|--------|
| 1 | Green 1 | Marshal | 305.00 |
| 2 | Red 1 | Strike | 264.00 |
| 3 | Red 2 | Guardian | 265.00 |
| 4 | Red 3 | Darkstar | 256.00 |
| 5 | Yellow 1 | Hawk 1 | 254.00 |
| 6 | Yellow 2 | Hawk 2 | 250.00 |
| 7 | Yellow 3 | Hornet | 270.00 |
| 8 | Violet 1 | Shell 1 | 257.00 |
| 9 | Violet 2 | Shell 2 | 255.00 |
| 10 | Violet 3 | Texaco | 262.00 |
| 11 | Violet 4 | Arco | 259.00 |
| 12 | Orange 1 | Devil | 268.00 |
| 13 | Orange 2 | Chevy | 269.00 |
| 14 | Orange 3 | Check | 260.00 |
| 15 | Blue 1 | Raven | 263.00 |
| 16 | Blue 2 | Dodge | 261.00 |
| 17 | Blue 3 | Ford | 267.00 |
| 18 | Indigo 1 | Trek | 251.00 |
| 19 | Indigo 2 | Viper | 253.00 |
| 20 | Indigo 3 | Colt | 266.00 |

ALT AFLD

| AFLD | FREQ | COOR |
|--------|---------|-----------------|
| Khasab | 124.350 | N26°11' E56°14' |

**GROUP A TARGET COORDIATES (HAWK 1)**

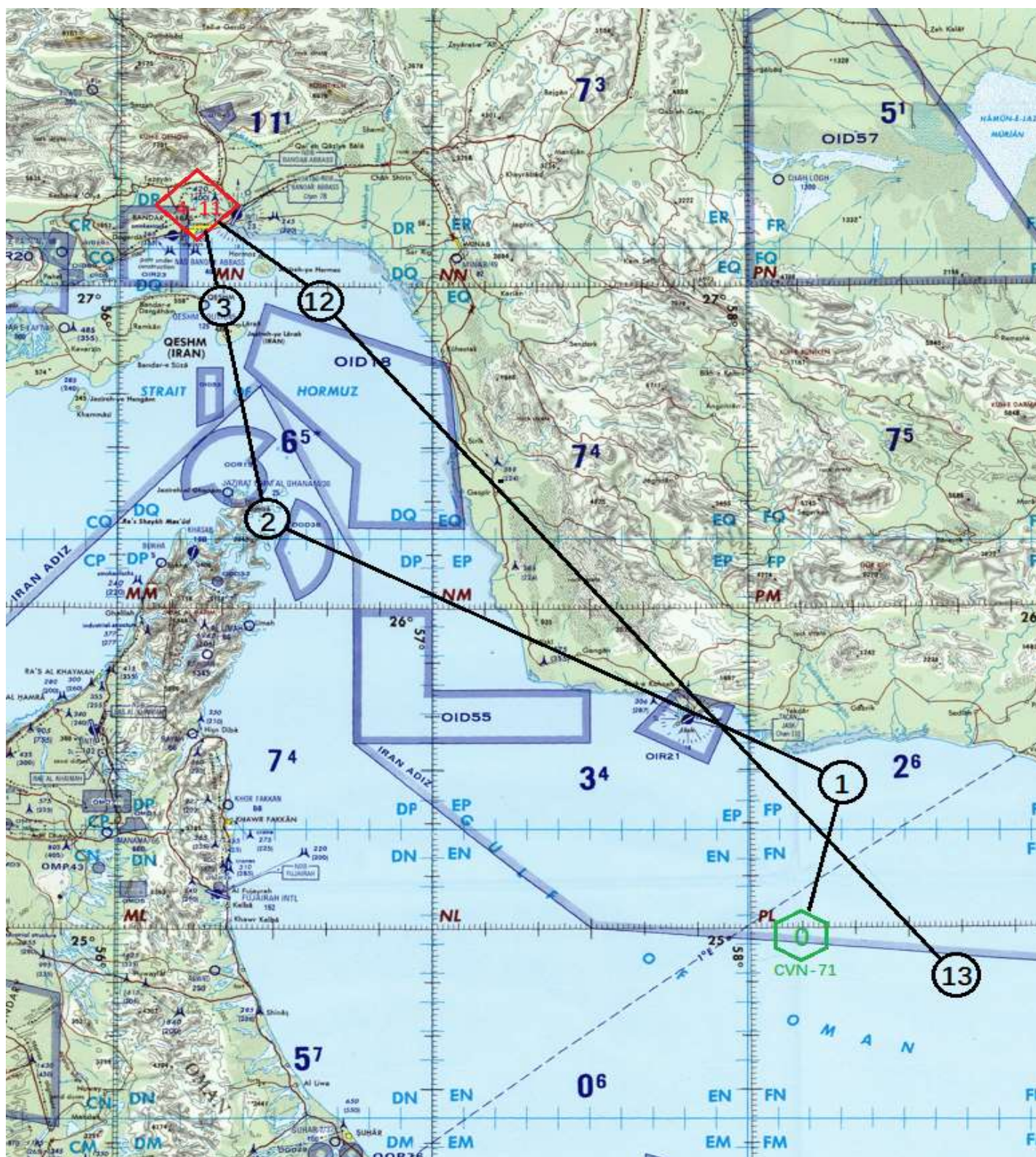
| NO | TYPE | COOR | ELEV | ATK CRS | TARGET |
|-----|----------|------------------------|--------|---------|---------------------|
| A4 | Storage | N27°10'54", E56°15'41" | 42 ft | Free | Weapon Storage |
| A5 | Radar | N27°11'44", E56°17'59" | 58 ft | 350-010 | Early Warning Radar |
| A6 | Depot | N27°12'37", E56°18'22" | 99 ft | 125-145 | Missile Depot |
| A7 | Building | N27°11'33", E56°20'14" | 43 ft | 105-115 | Intelligence Agency |
| A8 | Building | N27°13'21", E56°20'11" | 171 ft | Free | Drone Factory |
| A9 | Storage | N27°13'04", E56°21'14" | 74 ft | Free | Warehouse |
| A10 | Storage | N27°14'33", E56°21'31" | 97 ft | Free | Warehouse |
| A11 | Building | N27°15'37", E56°23'55" | 59 ft | Free | Weapon Storage |

GROUP A TARGET COORDIATES (HAWK 2)

| NO | TYPE | COOR | ELEV | ATK CRS | TARGET |
|-----|----------|------------------------|--------|---------|---------------------|
| B4 | Storage | N27°09'58", E56°14'20" | 27 ft | 340-010 | Weapon Storage |
| B5 | Building | N27°10'52", E56°13'13" | 77 ft | Free | Army Training Camp |
| B6 | Storage | N27°09'29", E56°12'54" | 28 ft | 055-115 | Warehouse |
| B7 | Building | N27°09'18", E56°08'40" | 34 ft | Free | Weapon Storage |
| B8 | Storage | N27°11'26", E56°06'23" | 108 ft | Free | Warehouse |
| B9 | Factory | N27°10'02", E56°04'19" | 68 ft | Free | Missile Factory |
| B10 | Radar | N27°08'57", E56°03'29" | 58 ft | Free | Early Warning Radar |
| B11 | Building | N27°06'40", E56°03'44" | 32 ft | 130-165 | Missile Storage |

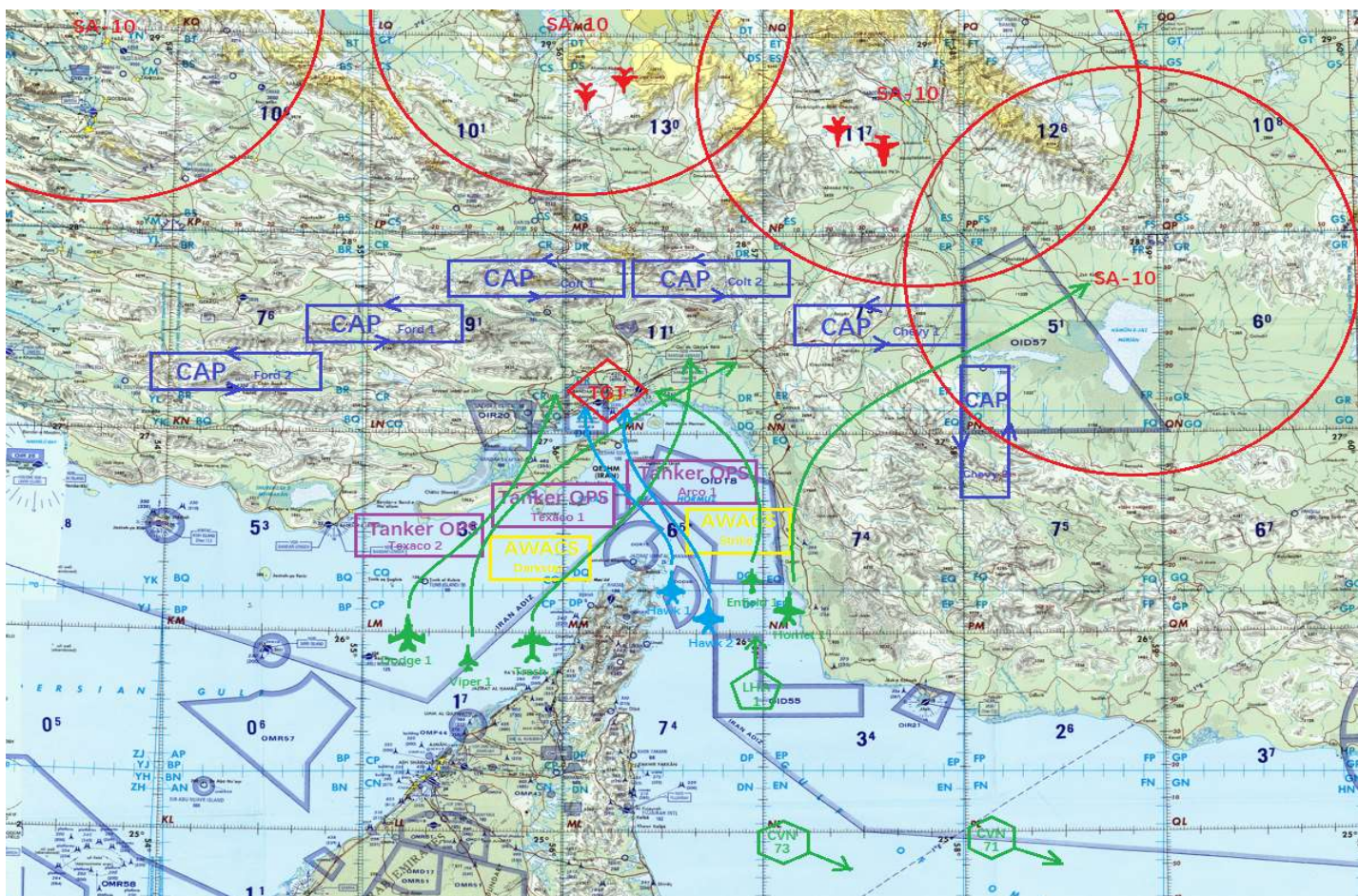
NOTE

| |
|--|
| |
|--|

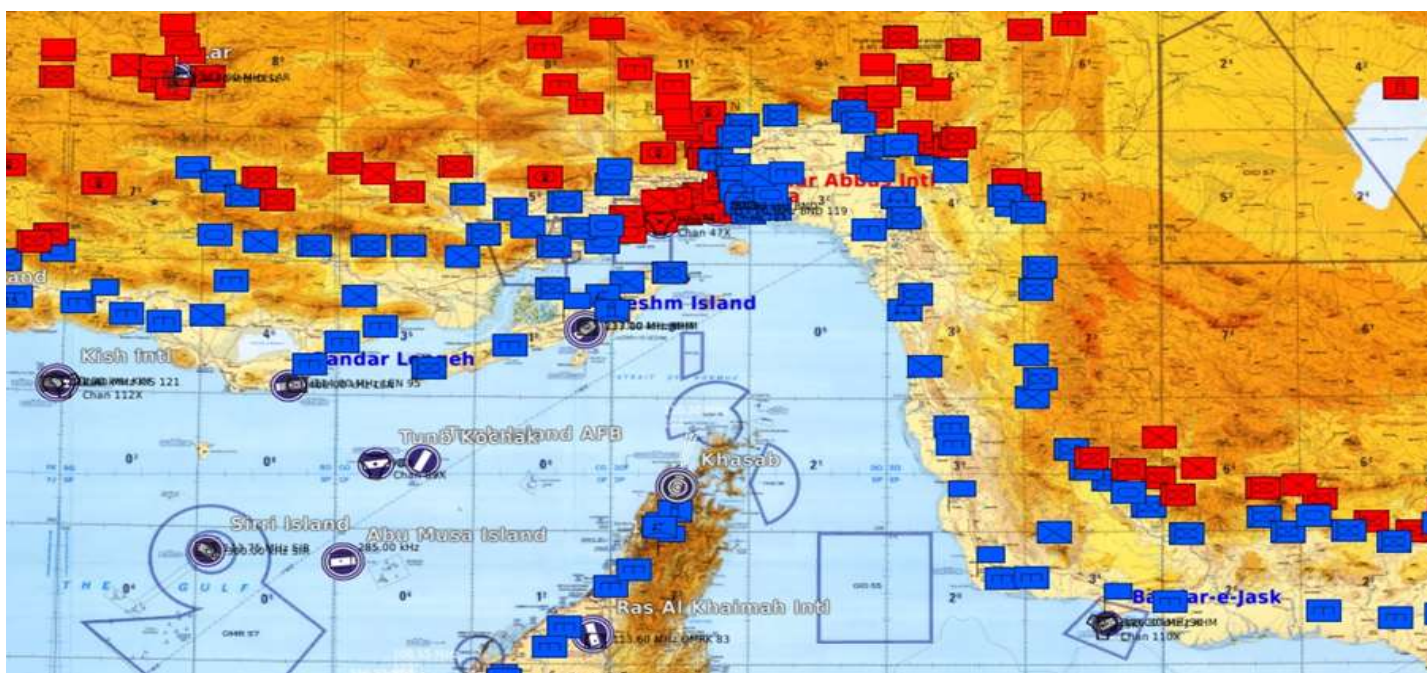


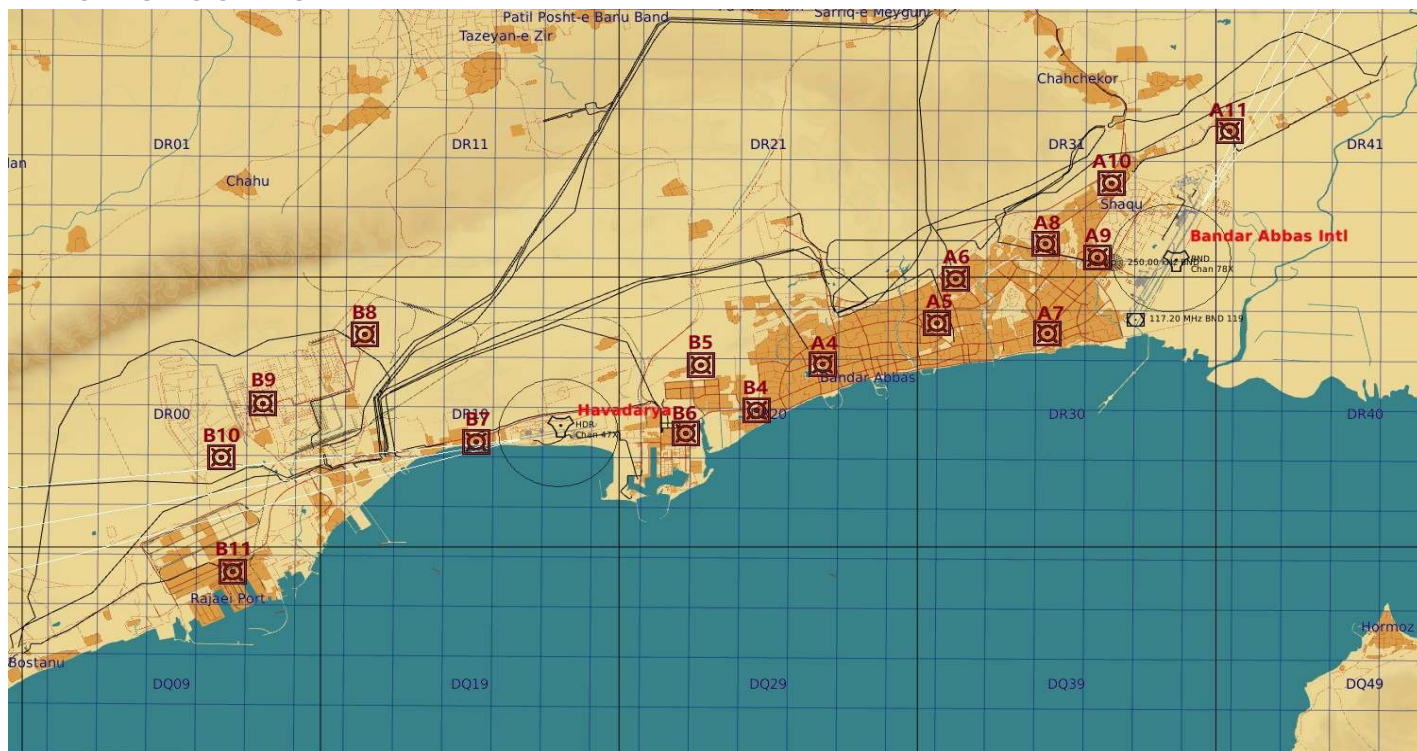
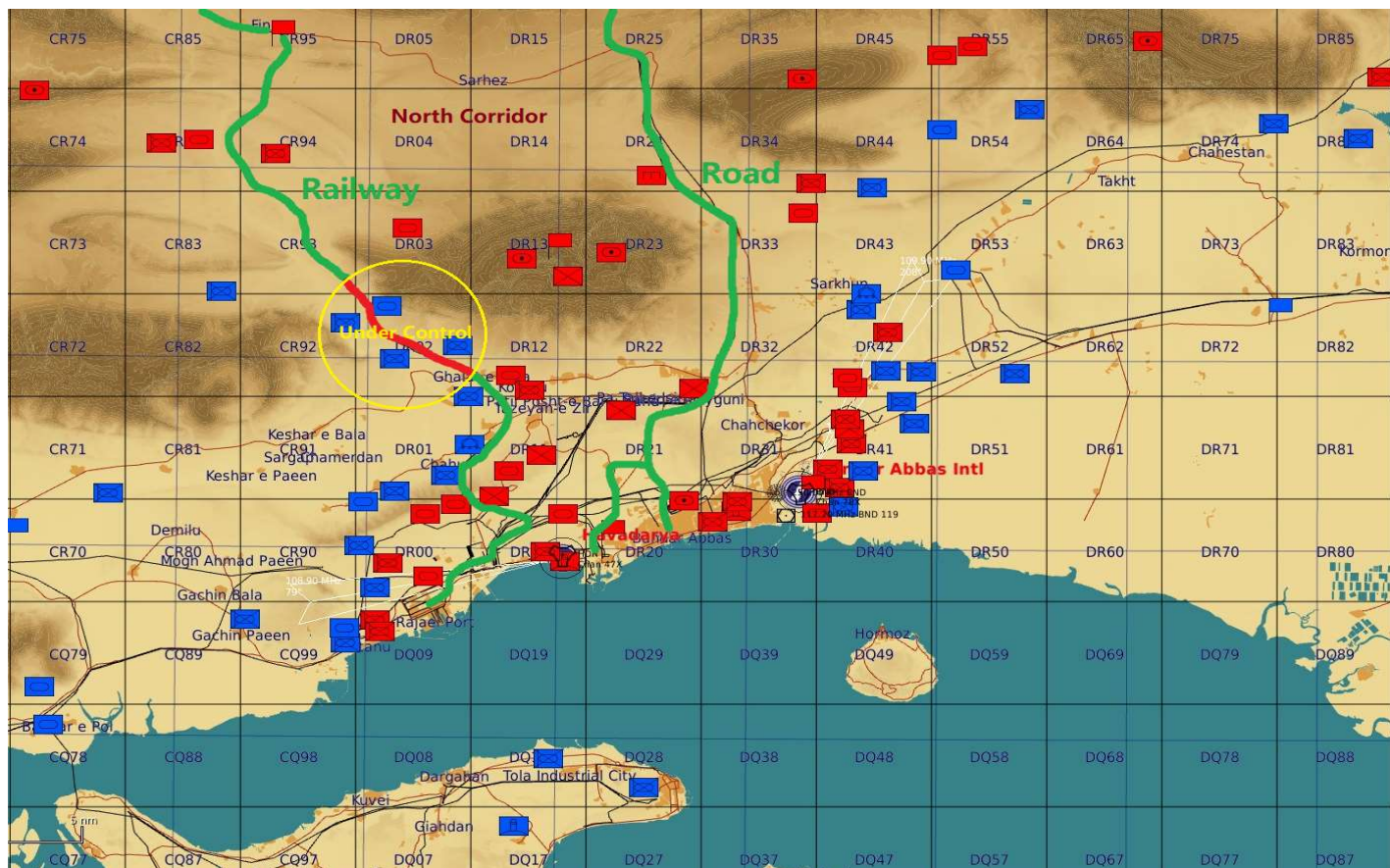


AIR OPERATION CHART



GROUND OPERATION CHART







HAWK 1 TARGETS





HAWK 2 TARGETS

