

## G C I v.4.3



GCI v.4.3 simulates a GCI where by taking an "image" from ground and naval radars it gives BRAA separately for each client/player and Coalition.

You can choose how many targets it will give you BRAA for, at what maximum distance, the refresh rate of the BRAA as well as the option to enable/disable the GCI, as in the image:



BRAA has the form of the image:



The ground and naval radars that will be able to take an "image" as well as the aircraft and helicopters that will "see" the radars, are already included in the code and you can update them from:

<https://github.com/mrSkortch/DCS-miscScripts/tree/master/ObjectDB>

Also, the real capabilities of hiding distance and height have been added to the naval radars, as well as for all the radars what coverage they have.

## The characteristics of ground and naval radars, as well as identifiable aircraft and helicopters, are at this point in the code passed:

-- GCI v.4.30 2025© for LOCK-ON GREECE by =GR= Astr0

```
local GCI = {
  clients = {},
  addedMenus = {},
  activeCoalitions = {
    [coalition.side.BLUE] = true, -- Enable/disable for BLUE
    [coalition.side.RED] = true  -- Enable/disable for RED
  },
  radarSpecs = { -- Radar nm, feet, degrees °
    -- Ground units
    ["SON_9"] = { range = 55, altitude = 40000, cover = 34 },
    ["FuMG-401"] = { range = 160, altitude = 40000, cover = 34 },
    ["FuSe-65"] = { range = 60, altitude = 30000, cover = 113 },
    ["Patriot str"] = { range = 160, altitude = 79200, cover = 103 },
    ["KDO_Mod40"] = { range = 30, altitude = 30000, cover = 360 },
    ["Allies_Director"] = { range = 30, altitude = 84480, cover = 360 },
    ["EWR_1L119_Nebo-SVU"] = { range = 400, altitude = 57024, cover = 360 },
    ["1L13 EWR"] = { range = 300, altitude = 79200, cover = 360 },
    ["55G6 EWR"] = { range = 400, altitude = 114000, cover = 360 },
    ["EWR_55G6U_NEB0-U"] = { range = 500, altitude = 120000, cover = 360 },
    ["FPS-117"] = { range = 463, altitude = 120000, cover = 360 },
    ["FPS-117 Dome"] = { range = 400, altitude = 100000, cover = 360 },
    ["EWR_Generic_radar_tower"] = { range = 350, altitude = 80000, cover = 360 },
    ["EWR_P-37_BAR_LOCK"] = { range = 350, altitude = 80000, cover = 360 },
    ["HQ-7_LN_P"] = { range = 20, altitude = 18000, cover = 360 },
    ["HQ-7_STR_SP"] = { range = 30, altitude = 25000, cover = 360 },
    ["HQ-7_LN_SP"] = { range = 20, altitude = 18000, cover = 360 },
    ["HEMTT_C-RAM_Phalanx"] = { range = 10, altitude = 9000, cover = 360 },
    ["Dog Ear radar"] = { range = 35, altitude = 34000, cover = 360 },
    ["M48 Chaparral"] = { range = 9, altitude = 17000, cover = 360 },
    ["Hawk cwar"] = { range = 70, altitude = 60000, cover = 360 },
    ["Hawk sr"] = { range = 90, altitude = 60000, cover = 360 },
    ["M6 Linebacker"] = { range = 8, altitude = 15000, cover = 360 },
    ["Hawk tr"] = { range = 90, altitude = 60000, cover = 360 },
    ["NASAMS_Radar_MPQ64F1"] = { range = 120, altitude = 39000, cover = 360 },
    ["rapier_fsa_blindfire_radar"] = { range = 30, altitude = 9800, cover = 360 },
    ["rapier_fsa_launcher"] = { range = 8, altitude = 9800, cover = 360 },
    ["rapier_fsa_optical_tracker_unit"] = { range = 20, altitude = 9800, cover = 360 },
    ["Roland ADS"] = { range = 12, altitude = 18000, cover = 360 },
    ["Roland Radar"] = { range = 35, altitude = 18000, cover = 360 },
    ["S-300PS_64H6E_sr"] = { range = 160, altitude = 88500, cover = 360 },
    ["S-300PS_40B6MD_sr"] = { range = 60, altitude = 82000, cover = 360 },
    ["S-300PS_40B6M_tr"] = { range = 160, altitude = 82000, cover = 360 },
    ["S-300PS_5H63C_30H6_tr"] = { range = 160, altitude = 88500, cover = 360 },
    ["S-300PS_40B6MD_sr_19J6"] = { range = 150, altitude = 88500, cover = 360 },
    ["SA-11 Buk SR_9S18M1"] = { range = 140, altitude = 82000, cover = 360 },
    ["Stre1a-10M3"] = { range = 8, altitude = 11500, cover = 360 },
    ["Tor_9A331"] = { range = 25, altitude = 20000, cover = 360 },
    ["2S6 Tunguska"] = { range = 18, altitude = 11500, cover = 360 },
    ["SNR_75V"] = { range = 100, altitude = 82000, cover = 360 },
    ["RD_75"] = { range = 100, altitude = 98000, cover = 360 },
    ["p-19 s-125 sr"] = { range = 160, altitude = 46000, cover = 360 },
    ["snr s-125 tr"] = { range = 100, altitude = 59000, cover = 360 },
    ["RPC_5N62V"] = { range = 400, altitude = 114000, cover = 360 },
    ["RLS_19J6"] = { range = 150, altitude = 80000, cover = 360 },
    ["Kub_1S91 str"] = { range = 70, altitude = 46000, cover = 360 },
    ["Osa_9A33 ln"] = { range = 30, altitude = 16500, cover = 360 },
    ["Gepard"] = { range = 15, altitude = 10000, cover = 360 },
    -- Naval units
    ["BDK-775"] = { range = 25, altitude = 20000, cover = 360 },
    ["PIOTR"] = { range = 250, altitude = 98500, cover = 360 },
    ["ara_vdm"] = { range = 18, altitude = 27000, cover = 360 },
    ["KUZNECOW"] = { range = 300, altitude = 98500, cover = 360 },
    ["CV_1143_5"] = { range = 300, altitude = 98500, cover = 360 },
    ["Forrestal"] = { range = 460, altitude = 100000, cover = 360 },
    ["CVN_71"] = { range = 370, altitude = 100000, cover = 360 },
    ["CVN_72"] = { range = 370, altitude = 100000, cover = 360 },
    ["CVN_73"] = { range = 370, altitude = 100000, cover = 360 },
    ["CVN_74"] = { range = 370, altitude = 100000, cover = 360 },
    ["CVN_75"] = { range = 370, altitude = 100000, cover = 360 },
    ["Essex"] = { range = 19, altitude = 1000, cover = 360 },
    ["CastleClass_01"] = { range = 25, altitude = 20000, cover = 360 },
    ["ALBATROS"] = { range = 278, altitude = 60000, cover = 360 },
    ["MOLNIYA"] = { range = 127, altitude = 55000, cover = 360 },
    ["TICONDEROG"] = { range = 324, altitude = 80000, cover = 360 },
    ["MOSCOW"] = { range = 500, altitude = 82000, cover = 360 },
    ["USS_Arleigh_Burke_IIa"] = { range = 370, altitude = 110000, cover = 360 },
    ["Type_052B"] = { range = 250, altitude = 33000, cover = 360 },
    ["Type_052C"] = { range = 350, altitude = 93000, cover = 360 },
    ["La_Combattante_II"] = { range = 19, altitude = 40000, cover = 360 },
    ["leander-gun-condell"] = { range = 148, altitude = 60000, cover = 360 },
    ["leander-gun-lynch"] = { range = 180, altitude = 75000, cover = 360 },
    ["PERRY"] = { range = 460, altitude = 80000, cover = 360 },
    ["REZKY"] = { range = 200, altitude = 60000, cover = 360 },
    ["NEUSTRASH"] = { range = 300, altitude = 70000, cover = 360 },
    ["leander-gun-achilles"] = { range = 96, altitude = 35000, cover = 360 },
    ["leander-gun-andromeda"] = { range = 370, altitude = 45000, cover = 360 },
    ["leander-gun-ariadne"] = { range = 204, altitude = 65000, cover = 360 },
  }
}
```

```

    ["Type_054A"] = { range = 250, altitude = 70000, cover = 360 },
},
targetTypes = {
    -- Aerial units
    ["A-10A"] = true,
    ["A-10C_2"] = true,
    ["A-10C"] = true,
    ["A-20G"] = true,
    ["A-4E-C"] = true,
    ["A-50"] = true,
    ["AJS37"] = true,
    ["AV8BNA"] = true,
    ["An-26B"] = true,
    ["An-30M"] = true,
    ["B-17G"] = true,
    ["B-1B"] = true,
    ["B-52H"] = true,
    ["Bf-109K-4"] = true,
    ["C-101CC"] = true,
    ["C-101EB"] = true,
    ["C-130"] = true,
    ["C-17A"] = true,
    ["C-47"] = true,
    ["Christen Eagle II"] = true,
    ["E-2C"] = true,
    ["E-3A"] = true,
    ["F-117A"] = true,
    ["F-14A-135-GR"] = true,
    ["F-14B"] = true,
    ["F-15C"] = true,
    ["F-15E"] = true,
    ["F-15ESE"] = true,
    ["F-16A"] = true,
    ["F-16A MLU"] = true,
    ["F-16C bl.50"] = true,
    ["F-16C bl.52d"] = true,
    ["F-16C_50"] = true,
    ["F-4E-45MC"] = true,
    ["F-5E"] = true,
    ["F-5E-3"] = true,
    ["F-5E-3_FC"] = true,
    ["F-86F Sabre"] = true,
    ["F-86F_FC"] = true,
    ["F/A-18A"] = true,
    ["F/A-18C"] = true,
    ["F4U-1D"] = true,
    ["F4U-1D_Cw"] = true,
    ["FW-190A8"] = true,
    ["FW-190D9"] = true,
    ["Falcon_Gyrocopter"] = true,
    ["H-6J"] = true,
    ["Hawk"] = true,
    ["Hercules"] = true,
    ["I-16"] = true,
    ["IL-76MD"] = true,
    ["IL-78M"] = true,
    ["J-11A"] = true,
    ["JF-17"] = true,
    ["Ju-88A4"] = true,
    ["KC-135"] = true,
    ["KC135MPRS"] = true,
    ["KC130"] = true,
    ["KC130J"] = true,
    ["KJ-2000"] = true,
    ["L-39C"] = true,
    ["L-39ZA"] = true,
    ["M-2000C"] = true,
    ["MB-339A"] = true,
    ["MQ-9 Reaper"] = true,
    ["MiG-15bis"] = true,
    ["MiG-15bis_FC"] = true,
    ["MiG-19P"] = true,
    ["MiG-21Bis"] = true,
    ["MiG-23MLD"] = true,
    ["MiG-25PD"] = true,
    ["MiG-25RBT"] = true,
    ["MiG-27K"] = true,
    ["MiG-29A"] = true,
    ["MiG-29G"] = true,
    ["MiG-29S"] = true,
    ["MiG-31"] = true,
    ["Mirage 2000-5"] = true,
    ["Mirage-F1AD"] = true,
    ["Mirage-F1AZ"] = true,
    ["Mirage-F1B"] = true,
    ["Mirage-F1BD"] = true,
    ["Mirage-F1BE"] = true,
    ["Mirage-F1BQ"] = true,
    ["Mirage-F1C"] = true,
    ["Mirage-F1C-200"] = true,
    ["Mirage-F1CE"] = true,

```

```

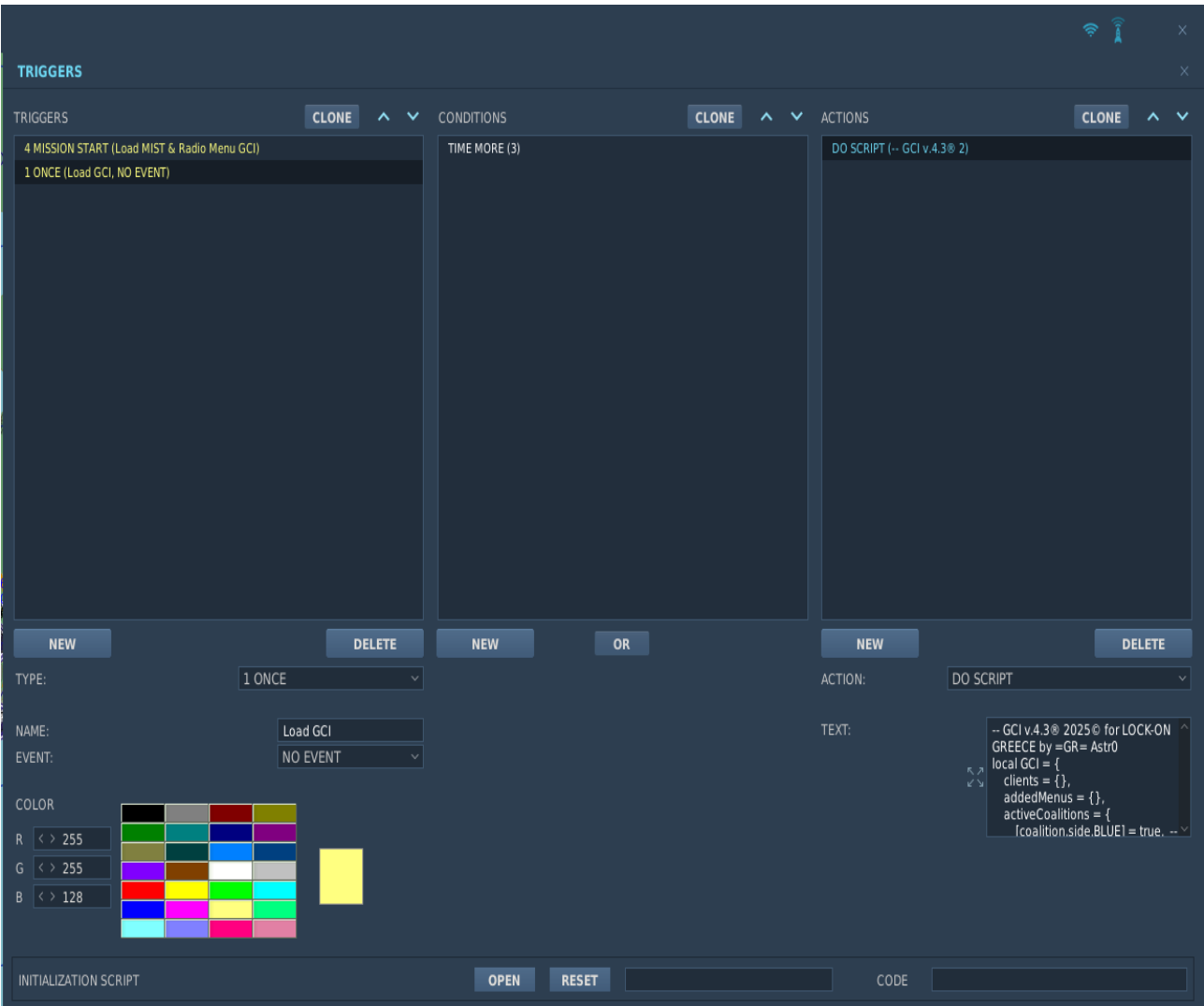
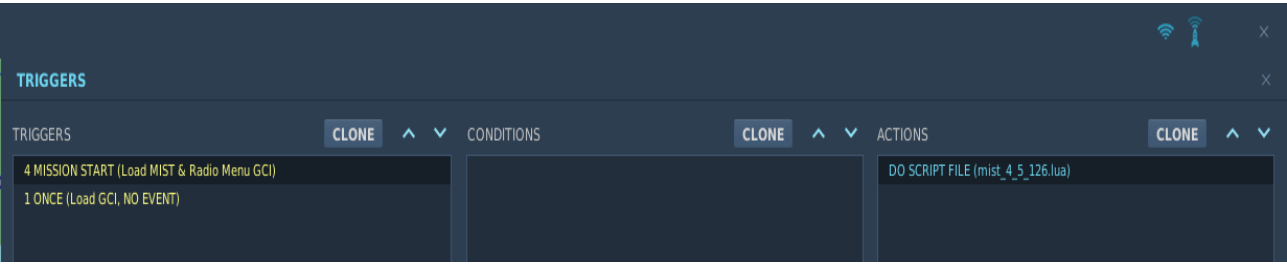
["Mirage-F1CG"] = true,
["Mirage-F1CH"] = true,
["Mirage-F1CJ"] = true,
["Mirage-F1CK"] = true,
["Mirage-F1CR"] = true,
["Mirage-F1CT"] = true,
["Mirage-F1CZ"] = true,
["Mirage-F1DDA"] = true,
["Mirage-F1ED"] = true,
["Mirage-F1EDA"] = true,
["Mirage-F1EE"] = true,
["Mirage-F1EH"] = true,
["Mirage-F1EQ"] = true,
["Mirage-F1JA"] = true,
["Mirage-F1M-CE"] = true,
["Mirage-F1M-EE"] = true,
["MosquitoFBMkVI"] = true,
["P-47D-30"] = true,
["P-47D-30bl1"] = true,
["P-47D-40"] = true,
["P-51D"] = true,
["P-51D-30-NA"] = true,
["RQ-1A Predator"] = true,
["S-3B"] = true,
["S-3B Tanker"] = true,
["SpitfireLFMkIX"] = true,
["SpitfireLFMkIXCw"] = true,
["Su-17M4"] = true,
["Su-24M"] = true,
["Su-24MR"] = true,
["Su-25"] = true,
["Su-25T"] = true,
["Su-25TM"] = true,
["Su-27"] = true,
["Su-30"] = true,
["Su-33"] = true,
["Su-34"] = true,
["TF-51D"] = true,
["Tornado GR4"] = true,
["Tornado IDS"] = true,
["Tu-142"] = true,
["Tu-160"] = true,
["Tu-22M3"] = true,
["Tu-95MS"] = true,
["WingLoong-I"] = true,
["Yak-40"] = true,
["Yak-52"] = true,
-- Rotary units
["AH-1W"] = true,
["AH-64A"] = true,
["AH-64D"] = true,
["AH-64D_BLK_II"] = true,
["CH-47D"] = true,
["CH-47Fbl1"] = true,
["CH-53E"] = true,
["Ka-27"] = true,
["Ka-50"] = true,
["Ka-50_3"] = true,
["Ka-52"] = true,
["Mi-24P"] = true,
["Mi-24V"] = true,
["Mi-26"] = true,
["Mi-28N"] = true,
["Mi-8MT"] = true,
["OH-58D"] = true,
["OH58D"] = true,
["SA342L"] = true,
["SA342M"] = true,
["SA342Minigun"] = true,
["SA342Mistral"] = true,
["SH-60B"] = true,
["UH-1H"] = true,
["UH-60A"] = true,
["UH-60L"] = true,
}
}

```

### **INSTALLATION:**

- You need to load MIST in version mist\_4\_5\_126.lua and above.
- Load the GCI v.4.3. script in a Trigger.

See the images below:



**WARNING:**

- Use of GCI v.4.3.lua is at your own risk.