

# AI\_ATC Keywords List V2.0

## Transmission Repeat Last

Keywords Command	Action
Say Again last	Action Repeat last transmission

## Clearance Delivery

### IFR Sub Menu

Keywords Command	Action
Request a FLEX NORTH	Action FLEX NORTH
Request FLEX NORTH Transition	Action FLEX NORTH
Request a FLEX WEST	Action FLEX WEST
Request FLEX WEST Transition	Action FLEX WEST
Request a three MIKE	Action FLEX MMM TRANSITION
Request a three M Transition	Action FLEX MMM TRANSITION
Request a Dream Seven	Action DREAM 7
Request I F R Dream Seven	Action DREAM 7
Request a FYTTR Seven	Action FYTTR 7
Request I F R FYTTR Seven	Action FYTTR 7
Request a fighter Seven	Action FYTTR 7
Request I F R fighter Seven	Action FYTTR 7
Request a Mesa Eight	Action MORMON MESA 8
Request I F R Mesa Eight	Action MORMON MESA 8



## VFR Sub Menu

Keywords Command	Action
Request V F R for GASS PEAK	Action GASS_PEAK
Request V F R for DRY LAKE	Action DRY_LAKE
Request V F R for RED HORSE	Action RED_HORSE
Request V F R for SUNRISE	Action SUNRISE

## Clearance Readback

Keywords Command	Action
Squawk One Zero Zero One	Action Squawk 1001
Squawk Two Zero Zero One	Action Squawk 2001
Squawk Three Zero Zero One	Action Squawk 3001
Squawk Four Zero Zero One	Action Squawk 4001
Squawk Five Zero Zero One	Action Squawk 5001
Squawk Six Zero Zero One	Action Squawk 6001
Squawk Seven Zero Zero One	Action Squawk 7001

## Ground Operations

Keywords Command	Action
Request To Start Engines	Action Request Engine Start



Keywords Command	Action
Engine Start	Action Request Engine Start
Requesting Start	Action Request Engine Start
Requesting Taxi Clearance	Action Request Taxi Clearance
Requesting Taxi to Active	Action Request Taxi Clearance
Taxi to Active	Action Request Taxi Clearance
Clear of Runway	Action Taxi to Parking
Ground with you	Action Taxi to Parking

## Tower Operations

### Runway Crossing

Keywords Command	Action
Clearance to Cross three Right	Action Request clearance to cross 03R
Clearance to Cross three Left	Action Request clearance to cross 03L
Clearance to Cross Two One Left	Action Request clearance to cross 21L
Clearance to Cross Two One Right	Action Request clearance to cross 21R
Clearance to Cross Six Left	Action Request clearance to cross 06L
Clearance to Cross Six Right	Action Request clearance to cross 06R
Clearance to Cross Two Four Left	Action Request clearance to cross 24L
Clearance to Cross Two Four Right	Action Request clearance to cross 24R

### Take-off

Keywords Command	Action
Requesting Takeoff Clearance	Action Request Takeoff
Ready in turn	Action Request Takeoff
Ready at the Hold	Action Request Takeoff



### *Unrestricted climb on departure request*

<b>Keywords Command</b>	<b>Action</b>
Requesting Unrestricted Climb 5000	Action 5000
Requesting Unrestricted Climb 6000	Action 6000
Requesting Unrestricted Climb 7000	Action 7000
Requesting Unrestricted Climb 8000	Action 8000
Requesting Unrestricted Climb 9000	Action 9000
Requesting Unrestricted Climb 10000	Action 10000
Requesting Unrestricted Climb 11000	Action 11000
Requesting Unrestricted Climb 12000	Action 12000
Requesting Unrestricted Climb 13000	Action 13000
Requesting Unrestricted Climb 14000	Action 14000
Requesting Unrestricted Climb 15000	Action 15000
Requesting Unrestricted Climb 16000	Action 16000
Requesting Unrestricted Climb 17000	Action 17000
Requesting Unrestricted Climb One Eight Zero	Action FL180
Requesting Unrestricted Climb One Nine Zero	Action FL190
Requesting Unrestricted Climb Two Zero Zero	Action FL200
Requesting Unrestricted Climb Two One Zero	Action FL210
Requesting Unrestricted Climb Two Two Zero	Action FL220
Requesting Unrestricted Climb Two Three Zero	Action FL230
Requesting Unrestricted Climb Two Four Zero	Action FL240
Requesting Unrestricted Climb Two Five Zero	Action FL250
Requesting Unrestricted Climb Two Six Zero	Action FL260
Requesting Unrestricted Climb Two Seven Zero	Action FL270
Requesting Unrestricted Climb Two Eight Zero	Action FL280



Keywords Command	Action
Requesting Unrestricted Climb Two Nine Zero	Action FL290
Requesting Unrestricted Climb Three Zero Zero	Action FL300
Requesting Unrestricted Climb Three One Zero	Action FL310
Requesting Unrestricted Climb Three Two Zero	Action FL320
Requesting Unrestricted Climb Three Three Zero	Action FL330
Requesting Unrestricted Climb Three Four Zero	Action FL340

### *Tower Landing Sub Menu*

Keywords Command	Action
Request Straight In	Action Straight In
Request Overhead	Action Overhead
Simulated Flame Out	Action SFO
P A R Rollout	Action PAR
I L S Final	Action ILS

### *Tower Options Sub Menu*

Keywords Command	Action
Request Low Approach	Action Low Approach
Request back to departure	Action Request Departure
Request Back to Radar	Action Request Back to Radar
Request Instrument Final	Action Instrument Straight In

### *Tower Report responses*

Keywords Command	Action
Five Miles To land	Action Full Stop
Five Miles Touch and Go	Action Touch and Go
Five Miles Request low approach	Action Low Approach



Keywords Command	Action
Base To Land	Action Full Stop
Base Touch and Go	Action Touch and Go
Base Request low approach	Action Low Approach
Request Closed traffic	Action Request closed traffic
Making Missed Approach	Action Missed Approach
Request DUCK	Action Request DUCK
Request FLEX	Action Request FLEX
Passing DUCK	Action Report DUCK
Passing FLEX	Action Report FLEX
High Key	Action Report High Key
Low Key	Action Report Low Key

### *Tower Ancillary*

Keywords Command	Action
Traffic in sight	Action Traffic in sight
Nothing Seen	Action No Joy
Roger Extend Downwind	Action Acknowledge Extend Downwind
Say Winds	Action Say Winds
Break Out	Action Break Out

### Departures

Keywords Command	Action
Departure with you	Action Check in
Flash	Action Flash
Request back to Approach	Action Request Approach



# Approach

## Initial Check In

Keywords Command	Action
Checking In V F R	Action VFR
Checking In I F R	Action IFR
Checking In Again	Action Check In

## IFR Sub Menu

Keywords Command	Action
Request Hi TACAN Zulu	Action HI-TAC Z
Request TACAN Two One left	Action TAC21L
Request I L S Approach	Action ILS\LOC
Request Localizer Approach	Action ILS\LOC
Request Hi TACAN Yankee	Action HI-TAC Y
Cancel I F R	Action Cancel IFR
Request G C A	Action Request GCA

## Approach NAV Assist

### VFR Nav points

Keywords Command	Action
Vector for NIXON	Action Vector for NIXON
Vector for APEX	Action Vector for APEX
Vector for PHINN	Action Vector for PHINN
Vector for GASS_PEAK	Action Vector for GASS_PEAK
Vector for SARAH	Action Vector for SARAH
Vector for STRYK	Action Vector for STRYK
Vector for ACTON	Action Vector for ACTON



Keywords Command	Action
Vector for ARCOE	Action Vector for ARCOE
Vector for FLEX	Action Vector for FLEX
Vector for DRY LAKE	Action Vector for DRY_LAKE
Vector for NORTH GAP	Action Vector for NORTH_GAP
Vector for SAND DUNES	Action Vector for SAND_DUNES
Vector for I Fifteen	Action Vector for I Fifteen
Vector for SOUTH GAP	Action Vector for SOUTH_GAP
Vector for FYTTR	Action Vector for FYTTR
Vector for DREAM	Action Vector for DREAM
Vector for MMM	Action Vector for MMM

#### VFR Report points

Keywords Command	Action
Passing STRYK	Action Report STRYK
Passing ACTON	Action Report ACTON
Passing ARCOE	Action Report ARCOE
Passing DUDBE	Action Report DUDBE
Passing GASS PEAK	Action Report GASS_PEAK
Passing Dry Lake	Action Report DRY_LAKE
Passing Red Horse	Action Report RED_HORSE
Passing Sunrise	Action Report SUNRISE
Passing FYTTR	Action Report FYTTR
Passing JUNNO	Action Report JUNNO
Passing DREAM	Action Report DREAM
Passing MMM	Action Report MMM





Keywords Command	Action
Passing Three Mike	Action Report MMM
Passing SAND DUNES	Action Report SAND_DUNES

#### IFR Nav points

Keywords Command	Action
Vectors for ACTON	Action Vectors for ACTON
Vectors for DUDBE	Action Vectors for DUDBE
Vectors for SECR	Action Vectors for SECR
Vectors for HOKUM	Action Vectors for HOKUM
Vectors for HULPU	Action Vectors for HULPU
Vectors for JENAR	Action Vectors for JENAR
Vectors for JOGEV	Action Vectors for JOGEV
Vectors for WILIE	Action Vectors for WILIE
Vectors for KITCH	Action Vectors for KITCH
Vectors for ARCOE	Action Vectors for ARCOE
Vectors for RONKY	Action Vectors for RONKY
Vectors for WISTO	Action Vectors for WISTO
Vectors for OLNIE	Action Vectors for OLNIE
Vectors for KUTME	Action Vectors for KUTME
Vectors for SHEET	Action Vectors for SHEET
Vectors for ROTSE	Action Vectors for ROTSE
Vectors for JELIR	Action Vectors for JELIR
Vectors for CADOS	Action Vectors for CADOS
Vectors for SESDE	Action Vectors for SESDE
Vectors for KRYSS	Action Vectors for KRYSS



<b>Keywords Command</b>	<b>Action</b>
Vectors for HEREM	Action Vectors for HEREM
Vectors for JUNNO	Action Vectors for JUNNO
Vectors for ATALF	Action Vectors for ATALF
Vectors for CUVAX	Action Vectors for CUVAX
Vectors for ZINAX	Action Vectors for ZINAX

#### Vectors to Airports Nevada

<b>Keywords Command</b>	<b>Action</b>
Request Vectors for Beatty	Action Beatty
Request Vectors for Boulder City	Action Boulder City
Request Vectors for Creech	Action Creech
Request Vectors for Echo Bay	Action Echo Bay
Request Vectors for Groom Lake	Action Groom Lake
Request Vectors for Henderson Executive	Action Henderson Executive
Request Vectors for Jean	Action Jean
Request Vectors for Laughlin	Action Laughlin
Request Vectors for Lincoln County	Action Lincoln County
Request Vectors for McCarran International	Action McCarran International
Request Vectors for Mesquite	Action Mesquite
Request Vectors for Mina	Action Mina
Request Vectors for Nellis	Action Nellis
Request Vectors for North Las Vegas	Action North Las Vegas
Request Vectors for Pahute Mesa	Action Pahute Mesa
Request Vectors for Tonopah	Action Tonopah
Request Vectors for Tonopah Test Range	Action Tonopah Test Range



# Range Control Blackjack

## Entry/Exit

Keywords Command	Action
Blackjack entry gate one	Action Check in Gate 1
Blackjack entry gate two	Action Check in Gate 2
Blackjack entry gate three	Action Check in Gate 3
Blackjack entry gate four	Action Check in Gate 4
Blackjack entry NIXON	Action Check in NIXON
Blackjack entry SARAH	Action Check in SARAH
Blackjack exit gate one	Action Check Out Gate 1
Blackjack exit gate two	Action Check Out Gate 2
Blackjack exit gate three	Action Check Out Gate 3
Blackjack exit gate four	Action Check Out Gate 4
Blackjack exit NIXON	Action Check Out NIXON
Blackjack exit SARAH	Action Check Out SARAH

## Blackjack Request vectors

Keywords Command	Action
Blackjack vector to gate one	Action Vector to Gate 1
Blackjack vector to gate two	Action Vector to Gate 2
Blackjack vector to NIXON	Action Vector to NIXON
Blackjack vector to SARAH	Action Vector to SARAH
Blackjack vector to gate three	Action Vector to Gate 3
Blackjack vector to gate four	Action Vector to Gate 4



# Nellis Air Traffic Control Facility (NATCF)

## *NATCF Report egressing*

Keywords Command	Action
Sally Gate One Outbound	Action Request Egress at gate 1
Sally Gate Two Outbound	Action Request Egress at gate 2
Sally Gate Three Outbound	Action Request Egress at gate 3
Sally Gate Four Outbound	Action Request Egress at gate 4
Sally NIXON Outbound	Action Request Egress at NIXON
Sally SARAH Outbound	Action Request Egress at SARAH
Lee Gate One Outbound	Action Request Egress at gate 1
Lee Gate Two Outbound	Action Request Egress at gate 2
Lee Gate Three Outbound	Action Request Egress at gate 3
Lee Gate Four Outbound	Action Request Egress at gate 4
Lee NIXON Outbound	Action Request Egress at NIXON
Lee SARAH Outbound	Action Request Egress at SARAH

## *NATCF Request vectors*

Keywords Command	Action
Vector to Gate 1	Action Vector to Gate_1
Vector to FLUSH	Action Vector to FLUSH
Vector to JAYSN	Action Vector to JAYSN
Vector to STRYK	Action Vector to STRYK
Vector to Gate 2	Action Vector to Gate_2
Vector to BTY	Action Vector to BTY
Vector to Gate 3	Action Vector to Gate_3
Vector to DREAM	Action Vector to DREAM

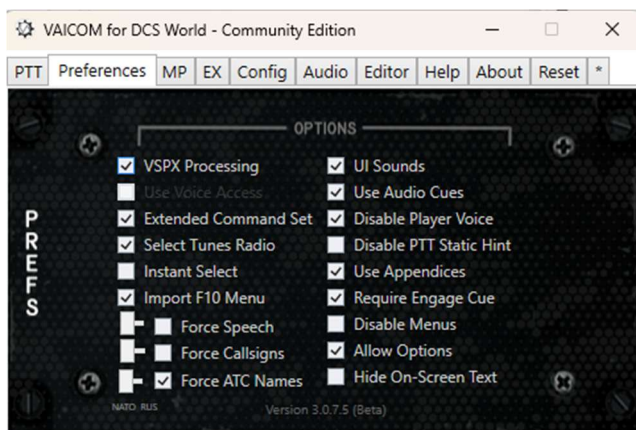


Keywords Command	Action
Vector to ARCOE	Action Vector to ARCOE
Vector to Gate 4	Action Vector to Gate_4
Vector to ELKXX	Action Vector to ELKXX

## User Notes

### Dynamic Commands

The AI\_ATC Keywords are generated dynamically by the script and depending on phase of flight and the sequence of the interactions will be available or removed from the F10 Other menu message tree. This makes it important to understand the flow of events and what command is required and what frequency must be tuned to use it. For this to work you must have Import F10 Menu selected in the Vaicom UI Preferences Tab.



As AI\_ATC Commands are added to the database dynamically within Vaicom, they will be matched with this command list. If a command is not yet as the script has not added it you will get Awaiting Additional Input in the Voice Attack log which indicates you have not followed the correct flow of procedure that AI\_ATC requires.

### For Users Upgrading from V1.0 of AI\_ATC

You will need to reset your keywords and imported database to refresh the command keywords as many have changed slightly.

