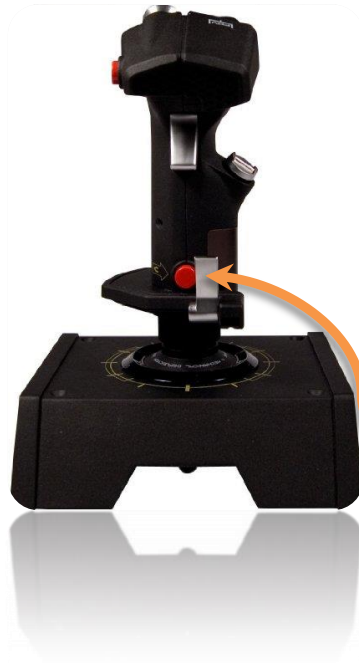


HOW TO MAKE A PADDLE-SWITCH MODIFIER

How to make the paddle switch a modifier

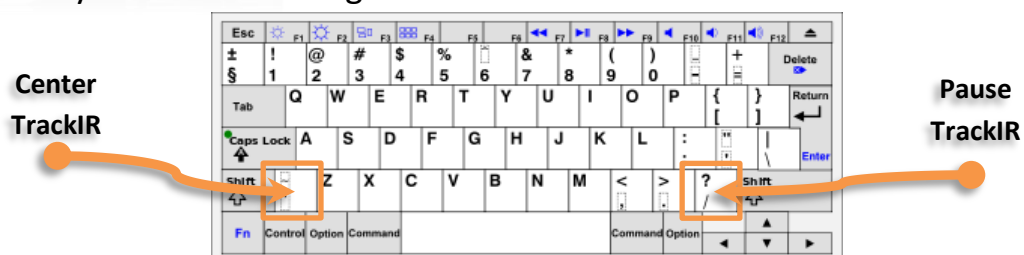
A modifier-switch on your joystick will allow you to at least double the number of actions on the stick. Even for the Flaming Cliffs 3 planes it is very useful.



This could
be your
modifier
switch



For all of you that have assigned the TrackIR CENTER at the Paddle Switch, try this:



HOW TO MAKE A PADDLE-SWITCH MODIFIER

a)



Choose „Options“
in the main menu.

b)



Klick on „Controls“
followed by
„Modifiers“.

Aktion	Keyboard	Throttle - HOTAS Wo	Sattel - Pro Flight Con	Joystick - HOTA
Abdeckung Sicherungskasten	LCtrl + LShift + S			
Abdeckung Ölkühler	LShift + LWin + Pause			
Aktive Pause	LShift + F10			
Alle Bezeichnungen	RCtrl + Entf			
Alle Einheiten Sicht-Modus	Pos1			
Anlasser	RShift + Pos1			
Anreterungsschalter Funkmodus	LAlt + LCtrl + 5			
Ausgewähltes Flugzeug steuern	RAit + J			
Ausstieg	LCtrl + E			
Batterie	B			
Beide Radbremsen Ein	W			
Beleuchtung Flügelspitzen AUS	RShift + U	JOY_BTN14		
Beleuchtung Flügelspitzen HELL	RAit + U	JOY_BTN13		
Bezeichnungen Flugzeuge	LShift + F2			
Bezeichnungen Lenkflugkörper	LShift + F6			
Bildschirmfoto (Screenshot)	Druck			
Bomben scharfstellen links AUS	LShift + 6			
Bomben scharfstellen links (Drehschalter)	6			
Bomben scharfstellen links CHEMIEABWURF	LAlt + 6			
Bomben-Raketen Auswahlsschalter (Drehschalter)	D			
Bomben-Raketen Auswahlsschalter BOTH	LCtrl + D			
Bomben-Raketen Auswahlsschalter TRAIN	LAlt + D			
Bomben-Raketen Auswahlsschalter auf RAKETEN	LShift + D			

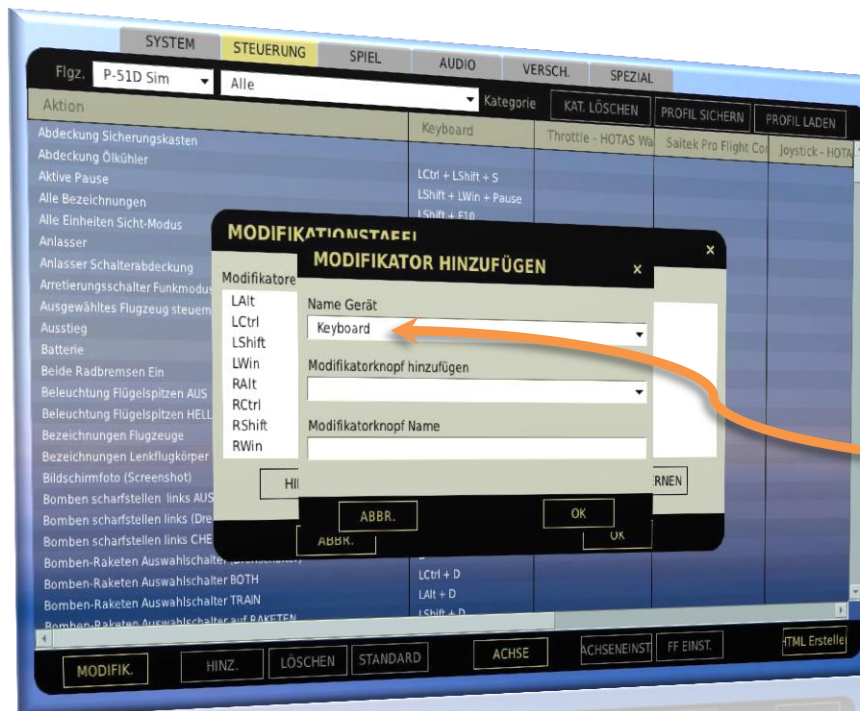
HOW TO MAKE A PADDLE-SWITCH MODIFIER

c)



Klick on "ADD".

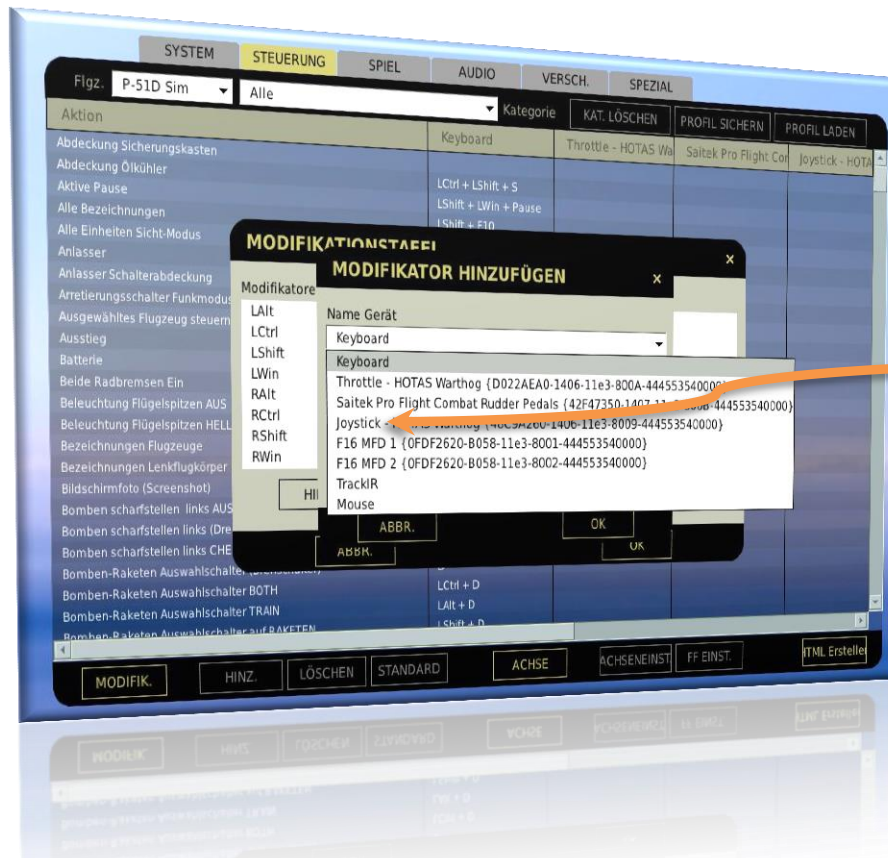
d)



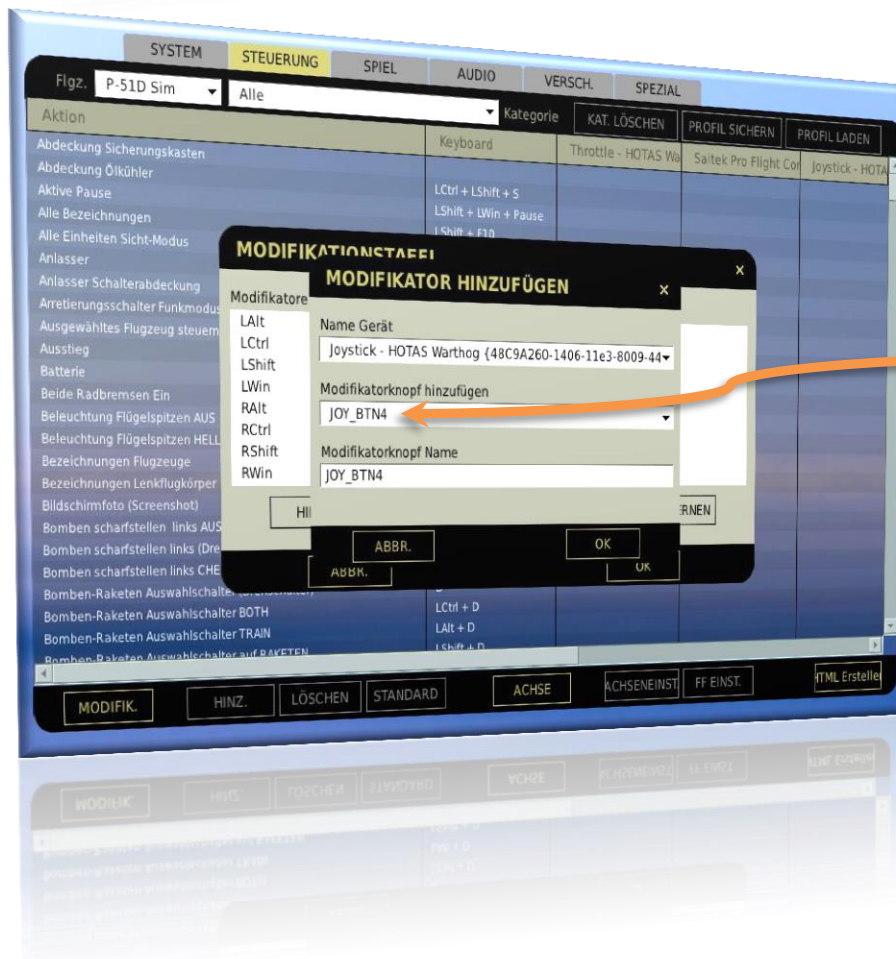
You now see this screen. You have to choose a device in the upper line.

HOW TO MAKE A PADDLE-SWITCH MODIFIER

e)

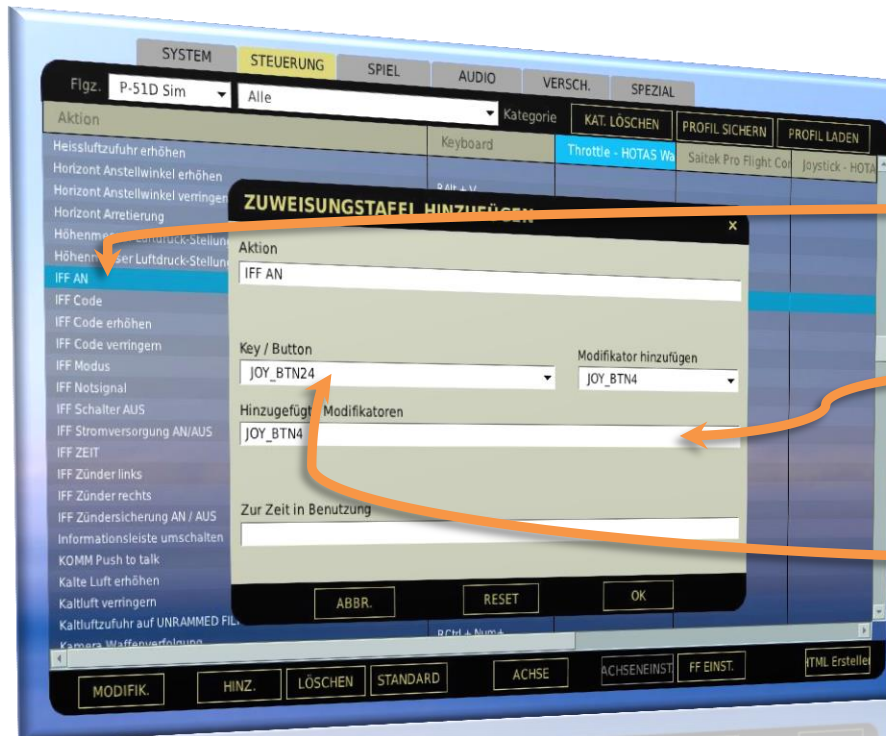


f)



HOW TO MAKE A PADDLE-SWITCH MODIFIER

g)



Now you can select any action of a particular layer, push the paddle-switch together with any other button of your stick.

h)



By doing so, it's possible to assign 2 actions on 1 Joystick-Button.